

BEFARe ANNUAL REPORT 2014



Basic Education for Awareness, Reforms and
Empowerment/Basic Education For
Afghan Refugees

ANNUAL REPORT 2014



**Basic Education for Awareness, Reforms and
Empowerment/Basic Education For
Afghan Refugees BEFARe**

TABLE OF CONTENTS

Message from the Chief Executive	01
1: Thanks to our Donors and Partners in 2014	02
2: About BEFARe.....	03
3: Education	06
4: Community Participation and Development.....	14
5: Monitoring & Evaluation	21
6: Sustainable Livelihoods.....	28
7: Women Empowerment.....	34
8: Others.....	37
9: Sectoral distribution of Funds in 2014	41
10: BEFARe Offices.....	42

**This report and the subsequent updates
are available at
www.befare.org**

LIST OF ACRONYMS

AAR	Association for Aid and Relief	FGD	Focus Group Discussion
BEFARe	Basic Education For Awareness Reforms and Empowerment /Basic Education For Afghan Refugees	FI	Food Items
PRM	Bureau of Population, Refugees and Migration	FPT	Focal Point Trainings
CAC	Community Advisory Committee	GATTC	Government Advance Technical Training Centre
CAR	Commissionerate of Afghan Refugees	NAVTTCC	National Vocational & Technical Training Commission
CBO	Community Based Organization	GBV	Gender Based Violence
CDA	Community Development Approaches	GEP	Gender Equity Program
CIDA	Canadian International Development Agency	GPS	Global Positioning System
CMs	Community Motivators	GTVI	Government Technical and Vocational Institute
CNIC	Computerised National Identity Card	GVTC	Government Vocational and Technical Centre
COPE	Community Oriented Primary Education	HMC	Hayatabad Medical Complex
CP&D	Community Participation and Development	ILO	International Labor Organization
CRG	Constituency Relations Group	IOM	International Organization for Migration
CRP	Constituency Relations Program	IOs	International Organizations
CVSP	Conflict Victim Support Program	IP	Implementing Partner
DD	Deputy Director	IRD	International Relief and Development
DFID	(UK) Department for International Development	KTH	Khyber Teaching Hospital
DGG	District Governance Group	LOG	Logical Framework
DG-TEMT	Director General- Technical Education and Manpower Training	LRH	Lady Reading Hospital
EC	European Commission	MRV	Mobile Registration Van
ECP	Election Commission of Pakistan	MORR	Ministry of Refugees and Repatriations
EFA	Education For All	NADRA	National Data base and Registration Authority
EGRA	Early Grade Reading Assessment	SBA	Small Business Assistance
EMPT	Emergency Medical Professionals Trainings	MEP	Monitoring and Evaluation Program
ERT	Emergency Response Training	MSB	Middle School for Boys
FAFEN	Free and Fair Election Network	MSI	Management System International
FATA	Federally Administered Tribal Areas	MSTO	Monitoring Short Term Observers
FDMA	Federal Disaster Management Authority	MT	Master Trainer
FE	Formal Education	NFI	Non Food Items
FEO	Field Education Officers	PDMA	Provincial Disaster Management Authority
FES	Field Education Supervisors	PEI	Poverty Eradication Initiative
		PHAST	Participatory Hygiene and Sanitation Techniques
		PHED	Public Health Department

PRP	Pakistan Reading Project
PSG	Primary School for Girls
RAS	Refugee Affairs Specialist
PTC	Parent Teacher Council
RTI	Right To Information
SMC	School Management Committee
SC	Sub Centre
SMT	Senior Master Trainer
SOM	Sub Office Manager
SRSP	Sarhad Rural Support Program
STO	Short Term Observers
TAF	The Asia Foundation
TOT	Training of Trainers
TTB	Trade Testing Board
UNESCO	United Nations Educational Scientific and Cultural Organization
UNHCR	United Nations High Commissioner for Refugees
UNICEF	United Nations International Children Education Fund
USAID	United States Agency for International Development
USG	United States Government
WBDC	Women Business Development Centre
WG	Working Group
WRD	World Refugee Day
YRC	Youth Resource Centre

MESSAGE FROM THE CHIEF EXECUTIVE



It gives me immense pleasure to announce that the year 2014 took BEFARe to new levels of zeal and achievements. During the year 2014, the organization witnessed persistent growth both in mobilizing resources for its multi sectoral programs as well as substantiating its presence all across the country through

life changing programs in education, monitoring, health, sustainable livelihoods, democratization, women empowerment, awareness and numerous other diverse sectors. The organization has built on its humanitarian activities in all the four provinces of Pakistan including FATA, giving the organization more leverage to serve the vulnerable communities which have been neglected or underserved due to the enormous magnitude of the socio-economic constrictions prevalent in the country. BEFARe's management, in response to these daunting challenges, has taken concrete steps through making appropriate investments on strengthening the institutional capacity of the organization to further enhance its capacity to salvage the lives of the gullible poor and transform them to a level which brings them at par with their fellow citizenry.

Since its transformation in to an independent NGO in 2003, BEFARe embarked on a journey of phenomenal geographic and thematic growth. It has successfully completed numerous projects to provide solace to the marginalized communities. The organization is cognizant of the fact that still there are several areas and sectors which have been lying derelict and warrant intervention. In this regard, the organization continues to strive towards exploring new avenues in the ostensibly attended to areas where its programmes can be implemented so as to offer succour to the needy communities. The organizational resolve to help the poor is made possible by virtue of untiring efforts of its management team and continued perseverance and

voluntarily spirit of its staff who leave no stone unturned to implement the projects in their entirety and achieve unadulterated success.

All this would not have been possible without the continuous support of our donors and partners whose trust and confidence in our work made it possible for us to continue not only to accomplish our goals, but also enhance our capacity to take up new challenges. On behalf of BEFARe, I would also take the opportunity to thank our International and local donors, partners, government stake holders, and partner organizations for their continued support and patronage. I would also like to thank the communities we serve for taking an active role in improving the basic services and indicators of their respective areas rather than standing by as passive recipients of services.

I would like to acknowledge the support and firm commitment of our Board of Governors and its guidance and extending every possible support to strengthen the organization, enabling it to continue its endeavours for the uplift of downtrodden communities that we serve.

A handwritten signature in blue ink, appearing to read 'Shakir Ishaq'. The signature is written in a cursive style and is positioned above the printed name and title.

Shakir Ishaq
Chief Executive

THANKS TO OUR DONORS / PARTNERS IN 2014

BEFARe is grateful to all its donors, development partners and government stakeholders for their explicit support and trust in BEFARe team. The organization is appreciative of the assistance it received from donors in 2014, which enabled the organization to respond to the needs of the impoverished masses across Pakistan. Indeed, the assistance of the donors has repeatedly played a pivotal role in lifting the deprived communities out of their quagmire to lead happier and fruitful lives.

As we express our gratitude, we renew our appeal to the donors for further enhanced support that is commensurate with escalating humanitarian needs. This continuous support is paramount to assist the people aspiring for basic life amenities. BEFARe aspires that present and prospective donors will stand by us in our resolve to extend every possible support to the poor masses. By joining hands together in pursuance of our common objectives, we can mend the socio – economic indicators of Pakistan, enabling it to stand in the gallery of developed nations.



WHERE WE WORK

BEFARe programs are spread throughout the four provinces and FATA. Our Main office located in Peshawar has organizational support from eight offices located throughout Khyber Pukhtoonkhwa (KP), Punjab, Sindh and Islamabad.

ABOUT BEFARe



BEFARe established in 1989, as Pak-German bilateral project and later transformed into an independent NGO in 2003 is well known in the development sector in Pakistan. BEFARe over the years, due to its efficient service delivery and professionalism has earned confidence of the donors and expanded geographically as well as thematically. BEFARe has actively worked with Pakistan's federal, provincial and local government departments and structures to successfully implement multi-sectoral programs in education, health, governance, energy conservation, survey and research democratization, irregular migration, sanitation, micro-finance and others, with the support of all the leading donors operating in Pakistan, namely; BMZ, EC, World Bank, World Vision – Pakistan, South Asia Regional

Initiative, UNHCR, USAID, PRM, MSI, IRD, ILO, CIDA(AREP), CIDA(PIF), TAF, DFID, UNICEF, UNESCO, IOM, AAR Japan and others. BEFARe has a range of developmental professionals at its strength rendering their services under the supervision of Chief Executive, separated in to different departments; comprised of Finance & Administration, Education & Health, Community Participation & Development, Programs and Implementation, Research and Development, Democracy, Human Rights & Women Development and Monitoring & Evaluation department headed by respective managers. A Board of Governors comprised of eminent personalities is the top body of the organization.

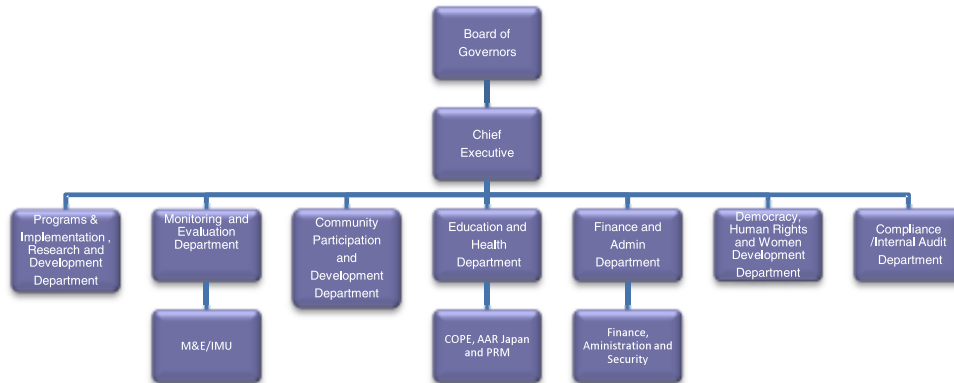


BEFARe currently has eight sub offices which assist the Head office (located in Peshawar) for interventions in every part of the country. Each sub-office is a full-fledged administrative setup established to support all kinds of activities planned for that specific area. BEFARe

has a database of qualified personnel who have served BEFARe previously in various interventions and can be mobilized and taken on board within a short time if BEFARe needs additional staff for new projects that it signs with donors.

BEFARe has a well-established finance department which ensures regular flow of funds for various departmental activities. It also ensures that the financial control regarding disbursements of funds in accordance to various donors needs are systematically reported to the donor organizations. Furthermore, it supervises and ensures the internal accounting control of the organization through activities like book keeping, on-time disbursement of funds as and when required for the programme activities. Finance department is also responsible for final budgeting of proposals, for submission to national and international donor agencies.

Organizational Structure of BEFARe



has approximately 1,200 staff members placed all over the country, working on different projects. BEFARe has sub offices in Peshawar, Mardan, Kohat, Abbottabad, Timergara, Multan and Karachi, while the country office is located in Islamabad. Each sub-office is supported through a Manager, Field Officer and Community Participation and Development personnel in addition to other administrative staff. It is provided with separate vehicles for monitoring and support of activities in their respective areas. Apart from the staff on roll, BEFARe

BEFARe has registered accounting software i.e. quick Books Enterprise Edition, installed in an independent finance server, administered by the Internal Audit & Compliance Officer. BEFARe has developed its own accounting manual by a reputable Chartered Accountants Firm which outlines detailed policies and procedures set out to be used in accounting for the organization & donors' financial transactions.

The finance department is enriched with qualified and



eminent professionals who can handle any amount of funds efficiently and accurately. The department in 2010 and 2011 handled USD 5.43 Million and USD 10 Million respectively, provided by various funding agencies. In the year 2014, the department efficiently handled projects worth USD 4 Million.

BEFARe has an efficient school funds management system that allows every stakeholder to have access to and monitor use and distribution of funds of each school, hence using the concepts of public accountability and audit for local development. The community representatives and elders are trained regularly for effective participation, resulting in increased sense of ownership. During 2014, the Community Participation and Development Department has generated and utilized around PKR 15.7 Million on construction and repair of classrooms,

verandas, roof replacements, toilets, and wells for the community. These readily replicable best practices have been continuously improved by international staff and visiting consultants of international repute, over a long period of time.

Our Vision:

We successfully promote institutional cooperation which contributes to sustainable social and economic development.

Our organization is strengthening its position in the national and regional market for institutional cooperation services.

Our Goal:

To improve and contribute towards better living standards of the identified displaced and underprivileged communities through interventions such as quality education, vocational & skills training, health, sanitation, microfinance, enterprise development, poverty alleviation and socioeconomic development initiatives.



BEFARe management team meetings regarding project implementation

EDUCATION



Community Oriented Primary Education

Children have an absolute right to education. This right applies without any discrimination whether children are at home, displaced, refugees, or asylum seekers. No government can deny a child, within its borders, their right to education. In the midst of conflict, education is often seen as a luxury for refugees or internally displaced people who are struggling to find food, aid and shelter. But education is a basic right. It is the refugees with an education, who provide leadership during displacement and in rebuilding communities recovering from conflict. Since its inception in 1989 and subsequent transformation in 2003, BEFAre has been a torch bearer in the educational sector extending its services to provide basic educational facilities to the Afghan refugees and the hosting communities in Pakistan with

the generous support of its donors.

In the year 2014, BEFAre continued to provide quality education to Afghan refugees through the continuation of Community Oriented Primary Education (COPE) project – the longest refugee education project worldwide operative since 1996. The project aims to educate Afghan refugee children between ages of 5 to 13 through formal education services at 127 BEFAre schools, which comprise of 65 boys, 36 girls and 26 co-education schools. The project also indirectly benefits Head Teachers, Teachers, Field Education Supervisors (FES), Field Education Officers (FEOs), and female Master Trainers. The decade long Community Oriented Primary Education (COPE) project is being supported by UNHCR.



Students taking annual exams

During the reporting year, the project extended quality educational facilities to over 57,000 Refugee children enrolled in 127 schools spread across 53 afghan refugee camps in 15 districts of Khyber Pakhtunkhwa. In January 2014, 56,883 students were enrolled at BEFARe schools - both primary and middle. At the end of the year in December 2014, the number had surged to 57, 319 amongst which 40,409 (70.498%) were boys and 16,910 (29.501%) were girls. These figures are not merely the number of students enrolled in BEFARe schools. It is a reflection, recognition and appreciation - both by the hosting communities as well as the Afghan refugees - towards the educational facilities extended by BEFARe in these schools. The targeted communities are cognizant of the fact that without honesty of purpose and conscientious efforts at BEFARe's end, the project would not have covered a period lasting more than a decade.



Lighter aspect of student's life

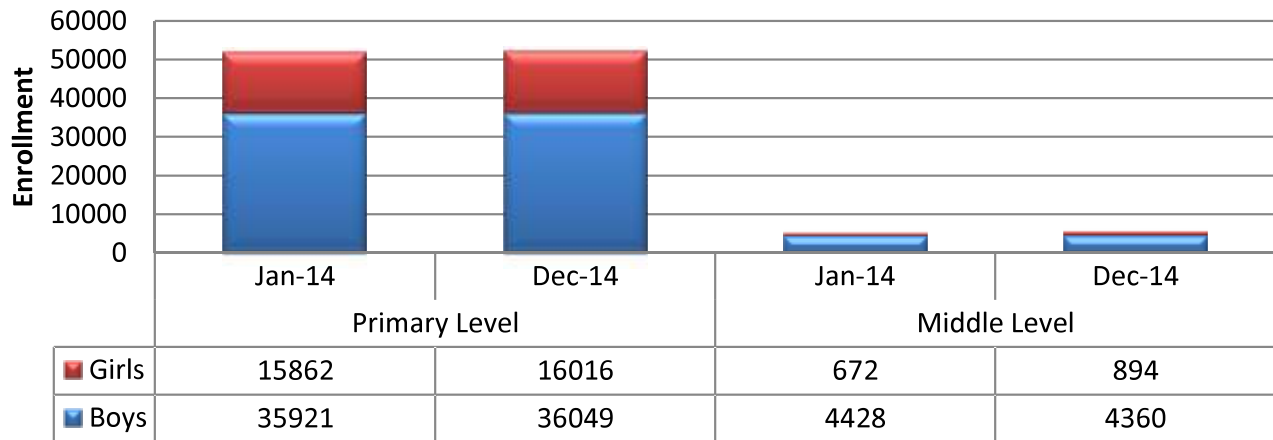
Shabeena – A Teacher in Making!!!!

Shabeena had never thought that at the age of 23, she will get another chance to continue her education as she had graduated from grade-6 in 2003. However, when the Head Teacher of MSG-271, Ghamkol, Ms. Rizwana visited her home to inform her about the up-gradation of BEFARe primary school to middle, she could not believe her luck; for all her life she had aspired to study more, but couldn't do so as her brothers didn't allow her to carry her studies but through consistent efforts of her teachers, her brothers relented and let her join the school.

Today, as a student of grade-8, she is sanguine about her own future and has also taken the initiative to impart education to other older girls of her community who are not allowed to attend school. She started off by teaching Quran to females at her home where everyday 20-25 girls come for this purpose and among them she identifies those females who have never been to school. Majority of the illiterate females are from Miankhel tribe who are not allowed by their families to study at school. Therefore, Shabeena with the help of her teachers, who provided her with recollected books, has started teaching them basic subjects and is passing on her knowledge to other deserving females.

When Shabeena was asked about the person who inspired her the most, she promptly replied, "My teachers, especially Ms. Rizwana (Head Teacher)". She elaborated:- "If it hadn't been for my teachers and their continuous efforts, today I would be at home doing household chores. But because of them, I am continuing my studies and learning something new about the world, about my surroundings and life in general. They are the ones who helped me become confident and made me believe in myself. That's why I want to become a teacher who will guide her students in the right direction and shape their futures which will help in transforming the future outlook of Afghanistan.

Overall Student Enrollment 2014



The COPE's activities at its 127 schools are administered through its five sub-offices in Abbottabad, Mardan, Kohat, Peshawar and Timergara due to the vast geographical spread.

“Education is not preparation for life; education is life itself”

Although the project main objective is to provide primary education to afghan refugee children but since 2010, the project has flourished; and has been providing middle education as well to the Afghan refugee children in the 50 upgraded schools. The up-gradation of the primary schools has been instrumental not only in improving the literacy rate amongst the refugees but it has also been a source of overall increase in the enrolment ratio at BEFARe schools.

The above figure reflects that there has been an increase of 0.76% in the overall enrollment by the end of the year 2014. The increase has been most significant amongst the female students of middle level, where at the beginning of the year only 13.17% students were females and at the end of the year, the percentage had increased to 17.01% - a reflection of the untiring efforts of BEFARe staff to equip the students with the sword of knowledge and education.

Teachers' Training:-

Skilled teachers are one of the single most important influences on student success. Teachers facilitate the process whereby students cultivate habits of mind and knowledge schemes that are prerequisites for success, meaningful contributions and prosperity. This makes teacher training of paramount importance in the outlook of an educated citizenry.

In the year 2014, BEFARe continued to impart on the job training to its teachers. The organization is resolute to enhance and refine the skills of its teachers to enable them to meet the pedagogical challenges of the 21st century. In order to do so, BEFARe organized a number of pre-service and in-service training courses for its



Participants of teacher training



Inside view of teacher training

teachers where not only the newly inducted teachers but the Master / Lead trainers also got the chance to update their knowledge and skills. The training of teachers encompassed modern day teaching techniques to enable the students to think out of the box solutions to the problems they will be confronting once they leave the serene environment of their class rooms.

Basic Teacher Training:-

In December 2014, ten (10) days basic teachers' training was conducted for 300 (male 210, female 90) COPE teachers at all BEFAre sub offices in Abbottabad, Kohat, Mardan, Peshawar and Timergara. The main topics the training covered included teaching languages, usage of teaching aids and guides, lesson planning, classroom management, learner's based teaching, etc. At the end of the training, the teachers also developed individual



Focal Point trainings in progress at AkoraKhattak Camp Nowshera

action plans which they will be using for future reference.

Focal Point Trainings:-

Apart from the basic teachers' training, 575 focal point trainings were also conducted at BEFAre's 127 schools during the reporting year. Field Education Supervisors (FESs), Master Trainers (MTs) or Field Education Officers (FEOs) imparted focal point trainings to mostly Head Teachers and Teachers of BEFAre administered schools. On average, one focal point per school was held each month. Thus, all the 924 COPE-BEFAre teachers got training on different topics throughout the reporting year. Focal Point trainings in progress at AkoraKhattak Camp Nowshera

Monitoring of Head Teachers:-

Monitoring and supervision of the teachers by the Field Education Supervisors (FESs) formed an important activity and continued throughout the year to ensure progressive teaching by all the teachers in their respective classes. It was either done by peeping into the in-session classes or by spending 40 minutes observing the teaching methodology of the teachers. The Field Education Officers / Master Trainers also provided on-job training to the teachers by conducting micro-lessons in the classroom which is also part of the BEFAre's teachers' training program.

Educational Competition:-

Competition plays an important role in academic achievement since it spurs students to pursue excellence, challenges them to work harder on their studies, and helps them get excited about academic content. Keeping in view the importance and vitality of educational competitions, such competitions are held on a regular basis at BEFAre schools. In the reporting year, BEFAre held 3rd Annual Education Competition at BEFAre HQ in Peshawar. The

According to education professor Thomas Good and Jere Brophy: "Team centred competitive activities greatly benefit students as long as they all have a chance to win"



A view of quiz competition MSB-136 Akora Khattak

competition was held in three phases. The first phase took place at the school level where all the students of Grade-6 competed against each other in four subjects – Mathematics, Islamiyat, Geography and Science. Top five students from each school were then selected who battled out for the top five spots against each other on sub-office level. These top five students (male and female each) in the final leg of the competition battled out at head office level for the coveted prize of best sub-center (SC) as well as individual top three prizes among male and female students. As for the best SC award, the best male SC went to Abbottabad where the male students were able to score an average of 95.6%. Among girls, Abbottabad SC again bested Peshawar SC where they managed an average of 89% against 83% scored by Peshawar.

Mr. Shakir Ishaq, Chief Executive BEFARe, in his concluding reflections congratulated all those students who made it to the final round of the competition and hoped that such competitions will encourage the students to work harder in the future and also set a precedent for the upcoming students to strive for excellence not only in their academic career but in extracurricular activities as well. He further commented that BEFARe along with its partners UNHCR and PRM remain committed to provide quality education to the Afghan refugees. He also thanked and congratulated the teachers, parents and the SC field staff for their laudable work.

Establishment of Turkman School:-

On October 09 2014, a new primary school at Turkman Camp near Jalozai, district Nowshera became operational. The camp lies 40 km south of Peshawar and constitutes 127th BEFARe AR School in KP. This school was established after an in depth assessment was carried out by BEFARe field team in the month of August 2014 and subsequent approval from UNHCR. As of December 2014, 279 students are enrolled from G-1 to 5, with approx. 90% male and 10% female students. Majority of students are Afghans, followed by children of Khyber Agency IDPs and Afghan labourers working at brick kilns. To meet with the educational needs of the school, 6 teachers were hired who underwent 10 days basic teachers training in December 2014.



A view of quiz competition at MSB-152 Kababyan



CE BEFARe awards prize to the winners

A child without education is like a bird without wings

Bird's-eye view of other prominent activities in the year 2014:-

- Final examination at all 127 BEFARe schools started from May 14th, 2014 and concluded on May 28th, 2014. Results of the examination were declared on May 31st, 2014.
- The three months summer break at BEFARe schools situated in summer zone started from June 02nd, 2014 and concluded on August 31st, 2014 while in winter zone, the schools were closed for one month only. i.e. from July 1st-31st, 2014.
- New academic session 2014-15 at winter zone started from June 02nd, 2014 while in summer zone, the session started from September 01st, 2014.
- Under EACI-UNHCR funding, school material for academic session was distributed in the months of Jan-March 2014.
- In July 2014, DRC started construction at four (04) BEFARe school buildings. i.e. MSG-089, Bagheecha, Mardan; MSG-281, Gandaf; PSC-326, Kutubgarh and MSB-147, Hajizai which was completed in October 2014.
- During the month of June 2014, BEFARe provided shelter to North Waziristan IDP families at its two schools PSB-031 and PSG-319 in Bazenkhel ARV, Bannu.
- In the month of August and September 2014, admission campaigns were held at BEFARe schools as well as community mosques to inform the community about the new academic session and also enroll the potential students.
- During 2014, FRD rehabilitated 28 BEFARe schools under UNHCR funding.
- Mid-term examination for academic session 2014-15 in winter zone was conducted 2nd week of December 2014.
- Due to the horrendous terrorist attack on Army Public School located in Peshawar, on December 16, 2014; the Government of KPK closed down all the schools including BEFARe schools from December 17, 2014 for an extended winter break.

For the reporting period, grade-wise enrolment up to 31st December, 2014 for 127 BEFARe schools (65 boys, 36 girls and 26 co-education schools) is as follows:-

By the end of December, the number of teaching staff was recorded at 794, comprising of 127 Head Teachers (HTs) and 667 teachers assisted through the UNHCR. The following table shows the number of school staff and students managed through the Main office and each of the sub-centres:-

Following is the breakdown of BEFARe schools that are administered under the sub-project at the end of reporting period:

Table: Detail of Enrolled Students up to December 2014

Sub-Offices	Grade 1		Grade 2		Grade 3		Grade 4		Grade 5		Grade 6		Grade 7		Grade 8		Total
	Girls	Boys	Girls	Boys	Girls	Boys	Girls	Boys	Girls	Boys	Girls	Boys	Girls	Boys	Girls	Boys	
Abbottabad	1138	2407	1265	2131	804	1959	444	1745	273	1401	156	1207	113	925	78	604	16,650
Kohat	568	1481	373	1251	269	1105	221	1143	84	850	48	655	31	423	31	336	8,869
Mardan	1172	1444	1112	1297	727	1254	512	1014	368	897	230	793	82	608	58	452	12,020
Peshawar	1113	2391	1000	2286	770	1977	608	1611	415	1312	425	996	390	946	345	686	17,271
Timergara	411	286	381	275	325	224	344	279	209	189	245	189	84	130	54	105	3,730
Sub-Total	4402	8009	4131	7240	2895	6519	2129	5792	1349	4649	1104	3840	700	3032	566	2183	58,540
	12411		11371		9414		7921		5998		4944		3732		2749		

Table: Detail of Staff up to December 2014

Sub-Offices	School Teaching Staff in December,2014		
	Head Teachers	Teachers	Teaching Staff
Abbottabad	32	216	248
Kohat	22	128	150
Mardan	29	183	212
Peshawar	27	327	354
Timergara	17	85	102
Total	127	939	1066

Table: Detail of BEFARe Schools up to December 2014

Sub-Offices	Number of Camps	Number of Schools		
		Girls' Schools	Boys Schools	Co-Eddo. Schools
Abbottabad	7	8	16	8
Kohat	16	4	11	7
Mardan	8	10	15	4
Peshawar	14	8	17	2
Timergara	7	6	6	5
Total	52	36	65	26
Total Schools			127	

PRM Support to Education:-

BEFARe in September 2013 signed an agreement with PRM to complement its COPE project through up gradation of 33 BEFARe primary schools to middle level and training and capacity building of School Management Committees (SMCs). The schools were upgraded on the criteria finalized and used by BEFARe for the up-gradation of 50 schools in 2010. In the second phase of its operation in the year 2014, PRM added G-8 at its 33 upgraded schools. The aim of the project is to ensure that Afghan refugee children especially females have access to middle schools assisting them in exploring venues for higher secondary education.

Hiring of new Teachers:-

To continue providing quality teaching services to the students promoted from G-7 to G-8, 60 additional teachers were hired for academic session 2014-15 at the 33 upgraded schools. Screening test was simultaneously conducted on September 15, 2014 at all BEFARe sub-offices while the interview and demos from the shortlisted candidates was conducted on September 16, 2014.

“Education is the preparation of body and soul for life”

Teachers' Training under PRM:-

To further polish the teaching skills of the newly hired teachers, 10-days basic teachers' training was organized in October 2014 under PRM funding. The training covered topics on pedagogy, class management and focused more on middle-grade classes including science subjects. At the end of the training, individual action plans were also developed. Under this training, 65 teachers were trained. Out of these 65 teachers, 57 were hired in this quarter while the remaining 8 teachers were from previous phase that got replaced due to various reasons.

Maimoona Ayub Khan

*A person born in and from the soil of Afghanistan,
He will remain an Afghan, no matter what language he speaks
(Malang Jan, Afghan poet)*

These words were spoken by Maimoona Ayub Khan, a student of grade-8, MSG-282, Panian, Haripur when asked how she felt about Afghanistan. She is a very passionate and confident young student who believes that up-gradation of BEFAre primary schools to middle under PRM funding could not have come at a better time. She narrated: - "Because the year I graduated from grade-6, they (school management) announced starting middle school, meaning I didn't have to waste time like some of my classmates who had to wait so many years before they could continue their education as they were not allowed to study outside the camp as all the secondary High schools for females are located outside the camp."

According to Maimoona, "Majority of the people living in ARCs are very lucky as they have access to so many facilities that people in Afghanistan are deprived off. Students in Afghanistan are sitting in open spaces with no roof on their heads as well as on floors as the government does not have so many facilities. I want to fight for these people as well."

Maimoona believes that everyone especially women should not feel afraid of taking an initiative. If they want to achieve something, they should not be scared and instead feel confident and work to achieve their goals just like she intends to do by striving to become a lawyer besides being a good human being.



COMMUNITY PARTICIPATION AND DEVELOPMENT



Participatory development is the most important approach towards enabling communities to help themselves and sustain outside efforts in the development work. Community members are important partners in development and therefore, participation, ownership and sustainability of the projects has the multiplier effect of enhancing the overall development of the local community and contributing to the country's national development and economic growth. Communities are no longer seen as recipients of development programs; rather, they have become critical stakeholders that have an important role to play in the management of programs and projects in their areas. Community participation thus enhances possibilities for project efficiency and effectiveness, cost-recovery, social acceptability, and sustainability.

BEFAre, acknowledging the importance of the subject, initiated the concept of Community Participation ever

since its inception in 1996. The core objective of the CP&D department was to galvanize the Afghan communities for self-reliance and sustainability in the supervision of their schools, ensuring their maintenance through awareness and empowerment. The CP&D department was also to identify the community needs, their priorities, existent resources and offer solutions for a paradigm change in the education sector for Afghan refugees.

Owing to tireless efforts of the CP&D department, the Afghan communities today are more vigilant and recognize the vitality of their active participation in promoting education and in meeting other challenges

Every successful individual knows that his or her achievement depends on a community of persons working together.

Paul Ryan

Detail of Meeting with SMCs and follow up visits to schools

Months	No of Meetings with SMCs			Follow up visits		Total
	Male	Female	Total	Male	Female	
January	30	12	42	60	14	74
February	25	19	44	42	35	77
March	26	14	40	58	18	76
April	29	9	38	95	32	127
May	44	20	64	102	29	131
June	33	16	49	58	20	78
July	0	0	0	0	0	0
August	26	8	34	51	10	61
September	36	19	55	106	36	142
October	40	15	55	101	20	121
November	32	16	48	104	23	127
December	34	14	48	81	22	103
	355	162	517	858	259	1,117

they have been confronted with for the past 30 years. Due to continued mobilization and encouragement by the CP & D department, Afghan refugees now form an integral part of the citizenship education and virtually every adult Afghan, with in his limited means, is doing his bit not only to promote education amongst their fellow refugees but also to find a constructive way out of their socio – economic predicaments. Their struggle derives its strength from the fact that the history of Afghan refugees is replete with daunting challenges and they are mindful of the fact that only consistent efforts can elevate their lives and that of the posterity.



SMC meeting at Haripur

Major activities of CP & D Department during the year 2014:-

Orientation and Motivation of SMCs:-

The success of any project depends on the level of community ownership of the intervention and their active participation. For this purpose, SMC (School Management Committees) were formed by the CP & D department in each of the BEFARe school right from the start of the project. In the year 2014, the CP & D department carried on with its efforts to mobilize the SMC's of each school to identify their priorities and needs so that they can be addressed; enabling SMC's to be more vigorous in the implementation of their activities. The SMC's were encouraged to take an active role both in the educational and extracurricular activities to broaden their horizon and make communities believe that their efforts are directed towards the welfare of the community. Thanks to continued mobilization of CP & D department, the SMC members actively participated in the project activities throughout the year. Regular meetings were conducted by the SMC's to look after the project activities and to address issues which were creating hindrances in the smooth functioning of the schools.

Key tasks performed by the SMC's during the reporting period:-

- Resource mobilization
- Spread the voice of Education importance
- Repair and maintenance of schools
- Enhance the learning process through Community Supported staff
- Address students dropout and absenteeism
- Engaging Students in Extra-curricular Activities
- Detail of Meeting with SMCs and follow up visits to schools

Community Supported Staff:-

A good indicator of success of the CP&D's department achievement is in continuously maintaining and often increasing community involvement in the schools operation. In the year 2014, CP&D department played active role in encouraging and mobilizing communities to financially support 114 watchmen performing their duties at the schools. Likewise, by the end of current implementation phase, community was providing financial assistance to 171 teachers who were spreading the light of knowledge in the gloomy communities.

Extracurricular Activities:-

Academics, no doubt, are an important part of student's life. However, there is another more playful component of a well-rounded education: the extracurricular activities. Besides being fun and a great way to socialize with peers, extracurricular activities can enhance students' time management and stress management skills, improving overall productivity and enabling them to manage their time, relieve stress and learn to strive for excellence in more than one thing.

As an important part of education development process, CP&D department BEFAre in the year 2014, organized a number of activities where SMCs' members, parents of the students, youth groups and camp elders took part to observe speeches, skits, sports competitions and role-plays. Several multidimensional competitions were also organized in the schools to provide and encourage extra-curricular activities among the students.

Detail of Incentives Paid from School Funds to Community Supported Staff:-

Months	Community Paid Teachers			Community Paid Watchmen		
	No. of Supported Schools	Teachers	Incentive paid PM in Rs.	No. of Supported Schools	Watchmen	Incentive paid PM in Rs.
January	72	144	465,150	127	110	352,150
February	72	144	465,150	127	110	352,550
March	74	143	604,200	127	110	472,250
April	77	158	673,900	127	111	427,550
May	77	155	667,810	127	112	428,320
June	78	156	111,300	127	112	361,550
July	78	156	0	127	112	428,320
August	78	159	127,500	127	112	394,750
September	79	175	753,816	127	114	442,380
October	80	182	794,900	127	113	438,000
November	80	177	806,610	127	114	446,860
December	79	171	810,000	127	114	455,700
Total			6,280,336			5,000,380
Grand Total				11,280,716		



New admission campaign in Bannu

Following major activities were performed during the reporting period.

- Annual Day was organized at the end of academic session in 94 schools
- Women Refugees Day was celebrated in 18 schools
- Annual education competition
- New admission campaigns in all sub-offices
- World Teachers Day in 9 schools with representation of 35 schools
- UNHCR delegation visit to Haripur
- PRM delegation visit and meeting with SMC members
- Sports competition in SO Kohat
- Cluster Meetings in SO Abbottabad

Celebration of 16 Days of Activism against Gender Violence:-

The 16 Days of activism against gender violence is usually celebrated from 25th November to 10th December across the globe which includes gender violence particularly International Day of violence

against women, Sexual violence, Political violence against women, HIV and International Human right Days. In light of the importance of the subject, a Grand function was organized by the CMs. A total of 41 schools of BEFAre participated with a large number of students, teachers, SMCs members, CAR officials and elders of the camps.

Tree plantation Campaign:-

CP&D department started its tree plantation campaign for the reporting year in the month of March 2014 which continued till April 2014 at all the 5 Sub Offices. Campaign highlighted the importance of green and clean atmosphere and its subsequent impact on a healthy environment. The action is revived in the growing season of each plant to inculcate in the community members the habit of green and clean living. The campaign not only entailed plantation for an improved atmosphere but it was also meant to instil amongst the community a sense of environmental responsibility. During the campaign, 443 tree saplings and 292 flower plants were planted by the school children with the support of community members in 27 schools.



Tree plantation campaign at MSB – 172 Mera Kachori

Sub office	No. of School			Amount
	Male	Female	Total	
Abbottabad	12	1	13	1,860
Peshawar	6	2	8	2,340
Mardan	6	1	7	7,490
Kohat	6	1	7	1,010
Timergara	5	1	6	1,700
Total	35	6	41	14,400

Details of Tree Plantation Campaign:-

Sub office	Schools took Part		Tree saplings planted		Flowers planted		Amount spent in Rs.	
	Boys	Girls	Boys	Girls	Boys	Girls	Boys	Girls
Abbottabad	5	2	75	0	0	10	3265	300
Peshawar	5	0	15	0	35	0	7525	0
Mardan	5	0	113	0	50	0	3250	0
Kohat	7	3	225	15	177	20	6635	800
Timergara	0	0	0	0	0	0	0	0
Total	22	5	428	15	262	30	20,675	1,100
Grand total	27		443		292		21775	

World Refugees Day:-

On June 20th 2014, World Refugees Day was observed by BEFAre in various schools. The event was orchestrated by the School Management Committees (SMC's) who contributed physically and financially to make the event a success. The purpose of the event was to show solidarity with the refugees. The event was observed with great zeal by the camp elders, teachers and students who delivered speeches and presented skits in relevancy of the "World Refugees Day".

Fundraising at Schools:-

Generation of funds is the back bone for the smooth operation of schools. In this regard, the CP&D department mobilized the communities to contribute as much as they could to support education of their children. Resultantly, the funds generated from the communities were spent through SMCs to look after the basic school affairs. As a standard procedure, fund books were maintained at the school level to ensure transparency at all levels.



A teacher delivering speech at World Refugee Day celebration at Sub Office Mardan

Area wise other details of the occasion

Sub office	Schools observed WRD	Students took part	No of Students	SMCs/elders Participated
Abbottabad	5	500	25	120
Mardan	2	120	35	62
Peshawar	3	385	52	105
Kohat	4	138	32	70
Timergara	1	110	25	50
Total	15	1,253	169	407

Detail of Fundraising during the year 2014:-

Sub-Offices	Maximum No. of Schools Participated	Funds Raised in Pak Rs.		
		Male	Female	Total
Abbottabad	32	5,368,480	669,800	6,038,280
Peshawar	27	3,125,991	414,950	3,540,941
Mardan	29	2,160,361	440,676	2,601,037
Kohat	22	2,580,416	152,698	2,733,114
Timergara	17	593,880	256,045	849,925
Total	127	13,829,128	1,934,169	15,763,297

The funds raised by SMCs were utilized in completing the following tasks:-

- Improving school learning and physical environment as per needs
- Provision of teaching aids
- Repair and maintenance of school buildings and infrastructure
- Additional construction in schools on need basis
- Arrangements for organizing different functions at schools
- Provision of additional facilities in schools
- Tree plantations
- Utility payments
- Rent and land lease payments of schools etc
- Midterm and Annual examination expenses in schools

SMC's training under PRM:-

In September 2013, BEFAre entered into a three years project agreement with PRM. One of the three components of the project is to enhance the capacity of School Management Committees (SMCs) pertaining to improvement in the quality of education and to secure enhanced support from the community towards their children' education. During the reporting year, a total of 100 SMC trainings were conducted under PRM initiative in all the sub-offices. A total of 1,450 SMC members actively participated in the training sessions. The primary goal of SMCs trainings and orientation was to build their capacities so that they could mobilize their communities to become more engaged with and supportive to their schools through the rejuvenation of the target communities.



A view of class room being constructed through community contribution at MSB 021-(Manshera)

Community contribution and expenditure report 2014:-

Summary of all sub-offices in the year 2014	Grand Total (Breakdown)		
	Schools	Amount spent	Expenses %
Construction	4	169,360	1.02
Repair and Maintenance	41	1,080,469	6.60
Item purchased	127	2,658,744	16.25
Utilities payments	56	931,285	5.70
Extra-Curricular activities	87	158,858	1.00
Social campaigns	44	84,533	0.51
Community paid Teachers	79	6,280,336	38.37
Community paid Watchman	127	5,000,380	30.55
Total of multi nature expenses	-	-	-
Grand total of expenses	127	16,363,965	-
Total previous year balance (Year 2013)	127	1,386,646	-
Funds collection in year 2014	127	15,763,297	-
Total available balance in year 2014	127	17,149,943	-
Balance remained	127	785,978	-

Statement of Community Contribution and expenditure report from 1996-2014:-

YEAR	Opening balance Rs.	RECEIPTS	Total Rs.	PAYMENTS	UNSPENT BALANCE
1996-1997	0	366,545	366,545	203,662	162,883
1998-	162,883	358,993	521,876	490,698	31,178
1999-	31,178	708,433	739,611	729,719	9,892
2000-	9,892	1,480,314	1,490,206	1,499,690	- 9,484
2001-	- 9,484	2,414,379	2,404,895	2,404,277	618
2002-	618	3,447,215	3,447,833	3,382,203	65,630
2003-	65,630	3,281,316	3,346,946	3,269,886	77,060
2004-	77,060	3,415,051	3,492,111	3,492,116	-05
2005-	-05	3,862,331	3,862,326	3,704,634	157,692
2006-	157,692	5,717,294	5,874,986	5,907,507	- 32,521
2007-	- 32,521	7,710,996	7,678,475	7,665,864	12,611
2008-	12,611	7,882,976	7,895,587	7,738,263	157,324
2009-	157,324	8,391,560	8,548,884	8,183,191	365,693
2010-	365,693	8,795,664	9,161,357	8,790,267	371,090
2011-	371,090	9,985,226	10,356,316	10,107,211	249,105
2012	249,105	12,595,385	12,844,490	11,601,389	1,243,101
2013	1,243,101	13,593,158	14,836,259	13,449,613	1,386,646
2014	1,386,646	15,763,297	17,149,943	16,363,965	785,978
Total till Dec'2014	0	109,770,133	114,018,646	108,984,155	785,978

MONITORING AND EVALUATION



Monitoring and evaluation is key to reach the targets of development goals. BEFARe, acknowledging the importance of the subject, has specifically established an Independent Monitoring Unit (IMU) in addition to the permanent M&E/MIS department for monitoring of organizations own implemented projects as well as third party monitoring and evaluation of on-going and completed projects on behalf of national and international donors / government departments. The organization has sound presence in KPK, FATA, Sindh, Punjab and FR regions to facilitate organizational outreach. In the realm of Monitoring and Evaluation, BEFARe was entrusted with the following tasks in the year 2014.

EGA IMPACT ASSESSMENT:-

BEFARe was awarded the contract by MSI for USAID implemented projects to carryout household survey to pilot test the Economic Growth and Agriculture (EGA) Impact Assessment survey in Southern Punjab, Northern Sindh, and Northern KPK. The purpose of the study was to test the EGA theory of change i.e. increased economic opportunity leads to economic and social empowerment, which in turn leads to community change. The pre-test aimed to ensure the reliability and validity of the survey instrument through a test-retest method for data collection and factor analysis among other data analysis methods. The survey was carried out in three districts / regions of Pakistan: Bahawalpur, Khairpur, and Swat districts in Southern Punjab, Northern Sindh, and Northern KPK.

HOUSEHOLD SURVEY FOR SOCIO-ECONOMIC STUDY IN FATA AND KP:-

The household survey for socio-economic study in FATA and Malakand Division in Khyber Pakhtunkhwa (KP) was carried out by BEFARe for Management Systems International (MSI) from February to March 2014. The objective of the survey was to obtain socio-economic data of residents in these areas. It is pertinent to mention that this data collection exercise is a follow-up to household surveys done previously in this region by BEFARe. The survey primarily focussed on governance, economic opportunities and other social issues.

Civilian Victim Support Programme (CVSP):-

In the background of the mounting terrorism associated incidents in the province of KPK and growing needs to support these victims of terrorism, United States Agency for International Development (USAID) initiated a project named - Civilian Victims Support Program (CVSP) in October 2012 in collaboration with International Relief & Development as an implementing partner whereas BEFARe (Basic Education for Afghan Refugees) as a Monitoring & Evaluation partner. The primary focus of the CVSP project was to facilitate the survivors of terrorism by salvaging them from the nasty trap of desolation and dependence, to revive their indulgence in economic activities and to equip and enable self-reliance amongst them. CVSP had in its targeted the province of Khyber Pakhtunkhwa and FATA- the areas where violence and terrorism have been pervasive since the war against terrorism initiated in 2001.

Core responsibilities assigned to BEFARe under CVSP project:-

- Conduct successful scrutiny and monitoring of at-least 20% of the allocated grants based on random sampling technique.
- Carry out the evaluation of allocated grants along with their comparative analysis with respect to the desired results.
- Ensure the maintenance and sharing of pictorial records, individual interviews record/case stories and database, with the donors.

- Generate monthly, quarterly and annual detailed reports and ensure its timely submission to the donor.
- Highlight key areas of improvement on the basis of lessons learnt.

In addition to the above, BEFARe's responsibilities also included its commitment to act as a third party verification unit and to provide services in support of Monitoring & Evaluation activities. The organization worked in close coordination with IRD, FATA Secretariat, and provincial line departments of KPK not only to ensure smooth implementation of the project but also to ascertain the impact of service delivery on the life of beneficiaries in a transparent manner. Furthermore, BEFARe was also tasked with the responsibility to highlight possible avenues for improvement in CVSP assistance delivery mechanism during the project implementation.

The project was formally initiated in November 2012. A total of 48 grants were monitored by BEFARe in the year 2012. The number of grants evaluated grew in the year 2013 when 945 grants/cases were scrutinized by the organization. During the reporting year i.e. 2014, the project team, with their concerted efforts, monitored and evaluated 720 (26%) grants of multi-nature assistance out of the received 2,774 grants surpassing the contractual agreement in which 20% grants were to be monitored out of the received grants. The increased number of grants evaluation in the reporting period reflects organizational resolve, mettle and dedication in successfully orchestrating multidimensional grants.

The nature of the monitored grants varied; including but not limited to Emergency food assistance, Vocational Skills training, Small Business Assistance, Emergency Response Training, Provision of Medical equipment etc. Modern day Monitoring & Evaluation techniques were used to gauge the impact of the grants ensuring a thorough assessment of each component. The grants evaluation results / outcomes were weighed against desired indicators/objectives, to ascertain the extent to which the project activities were successful in transforming the lives of terrorism victims/survivors in

Monitored grants in the year 2014:-

Batch monitored	Received	Monitored	Gender Status		Achievement Ratio
			Male	Female	
Batch-8	45	29	9	20	64%
Batch-9	211	95	78	17	45%
Batch-10	361	92	70	21	25%
Batch-11	672	146	112	34	22%
Batch-12	730	169	127	42	23%
Batch-13	78	26	22	4	33%
Batch-14	230	56	44	12	24%
Batch-15	447	107	82	25	24%
Total	2,774	720	544	175	26%

terms of restoration of their normal lives, livelihood provision, and economic stability and raising their life-standards. The attained results/outcomes also highlighted those shortcoming and loopholes of the project which could be rectified in the future for a more improved delivery of services to the victims of violence.

Planning strategy:-

BEFAre's CVSP team embarked a step-wise plan for the project monitoring implementation process. This included selection methodology/criteria, thorough

review of received batches, random selection of grants/beneficiaries', interviews methodology and distribution of desk review/tasks with regard to grants, identification of beneficiaries' origin & necessary tracking/liaison with them and drafting/preparation of task based tentative monthly plan.

CVSP Call Centre:-

BEFAre also established a separate unit "CVSP Call Center" under the umbrella of Civilian Victim Support Program with support of IRD (International Relief and

Call Center Annual Activity Report								
S/No	Month	Received Calls Detail				SMS	Registration seminars	Counseling
		Eligible	Not Eligible	Feedbacks	Total			
1	Jan-14	444	7	371	822	Nil	Nil	8
2	Feb-14	487	72	566	1125	Nil	161	8
3	Mar-14	380	36	981	1397	Nil	232	19
4	Apr-14	383	13	885	1281	Nil	98	14
5	May-14	268	14	703	985	Nil	116	15
6	Jun-14	157	2	508	667	Nil	209	3
7	Jul-14	17	1	267	285	Nil	Nil	13
8	Aug-14	50	4	436	490	Nil	Nil	16
9	Sep-14	45	3	515	563	Nil	Nil	19
10	Oct-14	31	2	334	367	Nil	Nil	9
11	Nov-14	16	0	274	290	Nil	Nil	16
12	Dec-14	19	1	282	302	3529	Nil	8
G. Total		2297	155	6122	8574	3529	816	148

Development). The main objective of the Call Center was to maintain a toll-free helpline (Call Center), extending its services to potential CVSP beneficiaries in Khyber Pakhtunkwa (KP) and Federally Administrative Tribal Areas (FATA). The Call Center (CC) was referred to as “CVSP Help Line” and responded to CVSP-related queries via toll-free mobile and landline telephone. The following components were monitored by BEFARe during the year 2014.

1) Vocational skills trainings (VST):-

Vocational Skills Training component of Civilian Victim Support Program- CVSP introduced different trades' skill trainings for the victims of violence / conflict. The core objective behind the conduction of these trainings was to either introduce the victims of violence / conflict to diversified vocational skills or to further improve the already existing skills of the conflict victims / beneficiaries if they had prior acquaintance with them. The offered trainings were to equip the targeted beneficiaries with marketable skills for decent earnings opportunities and self-reliance. All the monitored beneficiaries/trainees (223) were randomly selected out of the total (879) for evaluation of the assistance they received.

During the monitoring of the above skills program, BEFARe monitoring team also noted other important characteristics which were paramount in the student's learning in vocational skills program.



Tailoring trade trainees busy in tailoring at Jalozai at Jalozai camp

- Class room environment of the institutes offering trainings
- Washrooms, hygiene conditions and over all facilities of the institutes
- Trainer's performance, their behavioural and methodological impact analysis
- Course duration and class timings
- Stipend provision
- Satisfaction level of the trainees with regards to training material, accessibility to it, availability of different instruments etc

2. Small Business Assistance (SBA) initiative:-

One of the key ingredients of the CVSP project was to provide social and economic assistance to victims of the terrorism for early recovery and sustainable

Component wise statistical break-ups of the monitored grants in the year 2014:-

Type of Components Monitored	Component wise grants		Achievement Ratio
	Received	Monitored	
Vocational skills Training	879	223	25%
Emergency Food Assistance	145	55	38%
Small Business Assistance	627	205	33%
Medical Assistance	29	6	21%
Emergency Response training	294	40	14%
Scholarship	693	160	23%
Psychosocial Counseling	104	30	29%
Medical Equipment	3	1	33%
Grand Total	2,774	720	26%



PE interviewing beneficiary of SBA in Peshawar

development. Hence, small business assistance initiative was incorporated in CVSP to meet the core objective of the program and to assist civilian victims of terrorism on humanitarian basis.

Through the relief packages, the beneficiaries were pulled out of their morass state of affairs thereby restoring their confidence & hope and recovering their economic losses. The successful provision of the assistance package not only invigorated the hopes among beneficiaries but it also motivated them for further expansion of their business to regain their professional momentum.

During the reporting period, total 627 victims availed Small business assistance under CVSP initiative. Out of these, 205 beneficiaries' were monitored and evaluated by BEFARe team. The team meticulously observed that the intervention was efficacious in bringing the victims back to normal life; restoring their confidence and recovering their economic losses through SBA assistance. The beneficiaries – most of them hailed from poor background- were optimistic for further expansion of their current businesses and underscored the importance of the small business assistance in their economic renaissance.

3. Emergency Food Assistance's (EFA):

Emergency Food Assistance (EFA) component of Civilian Victims Support Program project entailed food provision to the most vulnerable and conflict-hit victims. The food assistance component was devised, keeping in

view the scarcity of food in the conflict-hit areas in an emergency situation. International Relief & Development-IRD carried out a thorough assessment in the targeted areas to sift the more deserving from the less deserving victims for immediate food assistance. The rationale behind Emergency food assistance was to provide respite to the victims of terrorism who were passing through testing times enabling them to fight the trauma with fortitude and determination.

All the EFA monitored beneficiaries were from KPK province including the Christian community (Peshawar) who had become victims of different bomb blasts and terrorist activities including the bomb blast at Custom Clearance office at TurkKham Khyber Agency and a Church at Kohati Peshawar. A total 145 cases male and female of different age groups were identified and provided emergency food assistance just after the incident. The monitoring team was able to monitor 55 (38%) beneficiaries of EFA. The basic data information of the monitored beneficiaries was physically verified by the PE's (Project Evaluators) through inquisitive questions during monitoring and interviewing process. A vast majority of the beneficiaries were either direct victims of terrorism or suffered severely due to victimization of their close and responsible family members.

The monitored beneficiaries expressed their satisfaction over the provision of food and non-food items under Emergency Food Assistance's component. 100% of the monitored beneficiaries opined that EFA was substantial in critical times and it ameliorated the lost confidence among the beneficiaries. The impact assessment analysis reflects the satisfaction of all the 55 monitored beneficiaries to a great extent.

4. Emergency Response Training (ERT):-

The Emergency Response Training (ERT) component was chalked out to save more lives in emergency situation by imparting basic first aid training to the Community Advisory Committee (CAC) comprised of local community members. The core objective of the training was to equip the CAC members (Community Advisory Committee) to appropriately handle the emergency situation and to provide potent support to

Batch Nos.	Monitored Beneficiary	Beneficiaries level of their needs satisfaction	
		To great extent	To some extent
Batch – 9	50	50	0
Batch –11	5	5	0
G. Total	55	55	0
Percentage		100%	0%

the victims of terrorism. The initiative was widely welcomed by CAC members everywhere and also by the community at large.

During the monitoring of beneficiaries, it was confirmed by all the respondents that 3 days first-aid training was provided to the community advisory committee members. A total of 294 CAC members were provided with first-aid training. The monitoring team of BEFARe was able to reach 40 ERT beneficiaries for possible assessment of the assistance.

5. Provisioning of Scholarship Assistance:-

One of the key components of the CVSP was to lend a helping hand to the vulnerable and their families through provision of Scholarships Assistance. The program offered educational assistance to the needy students anticipating an improvement in minimizing the financial burden and in increasing livelihood opportunities for the civilian victims of militancy in Khyber-Pakhtunkhwa.

BEFARe monitoring team received 693 grants of scholarship for possible verification and monitoring. As per laid down precedents, the team randomly selected at least 20% of the total grants. Hence 160 (23%) beneficiaries' assistance was evaluated in different areas of the KP province/FATA where al-together 306 students were getting benefit through scholarship provision.

6. Psychosocial Counseling Assistance:-

The psychosocial counselling component entailed psychosocial assistance to the victims and their families in their early recovery from the trauma. The monitoring team of BEFARe observed that majority of the CVSP beneficiaries were underprivileged, had limited resources and livelihood. During the reporting period,

the monitoring team received 104 grants of psychosocial counselling out of which 30 (29%) grants were monitored. Out of the monitored beneficiaries 60% (18) were direct victims while 40% (12) were indirect affectees of the incidents.

7. Medical Equipment provisioning:-

USAID, Conflict Victim Support Program also supported the emergency response in the three leading government run hospitals namely Lady Reading Hospital (LRH), Khyber Teaching Hospital (KTH) and Hayat Abad Medical Complex (HMC) in Peshawar. Essential medical equipment and training to medical professionals of respective hospitals was provided to further strengthen the existing capacities and to improve the services delivery in the three hospitals. Under CVSP initiative, IRD provided variety of medical equipment to the fore mentioned hospitals. BEFARe team was to monitor and confirm the quality, quantity, functionality and physical existence of the provided medical equipment. Random sampling technique was adopted by BEFARe team who visited Khyber Teaching Hospital Peshawar to verify CVSP donated equipment. The Project Evaluator met with Dr. Akbar Shah in-charge of Emergency ward at Khyber Teaching Hospital. The provided medical equipment was physically verified on the spot by the monitoring team member at Khyber Teaching Hospital.

8. Medical Assistance:-

Another component of the CVSP project, monitored by BEFARe team was the provision of medical assistance to the affected individual and their families. The rationale behind the provision of medical assistance was to revive the health of those who got physically crippled, disabled or had survived the conflict/terrorism but with chronic injuries. In this regard, IRD engaged well renowned medical rehabilitation institute PIPOS at Peshawar where victims were being provided orthotic and

Institute wise gender bifurcation of the monitored beneficiaries:-

Batch wise monitored scholarship beneficiaries' classification and gender status						
Batch Nos.	Monitored beneficiaries	Nos. of students availed Scholarship	Govt; schools		Private schools	
			Boys	Girls	Boys	Girls
Batch-10	40	79	16	10	30	23
Batch-11	94	201	68	42	61	30
Batch-14	26	26	3	4	17	2
Sub total	160	306	87	56	108	55
Grand total			143		163	

prosthetic treatment facilities. The total numbers of grants received by BEFARe were twenty-nine (29), out of which six (6) beneficiaries were monitored in different parts of the province. Although, rest of the beneficiaries

were contacted through available channels but none of them could be contacted as most of them were from far flung areas of different FATA/Agency and had gone back to their native regions.



Medical assistance beneficiary operating general store being interviewed by PE

SUSTAINABLE LIVELIHOODS



PRM LIVELIHOOD PROGRAM

In contemporary times, the importance of vocational and technical skills acquisition for sustainable livelihoods cannot be side-lined. The matter becomes more important for refugees who flee their homes with just the clothes on their backs. But no matter how much or how little refugees arrive with in different countries, most of them have the potential to become self-reliant in their places of refuge. The situation is no different in Pakistan which has been host to millions of Afghan refugees for over three decades. BEFARe, acknowledging the importance of the matter, has been extending its services to both the Afghan refugees as well as the local host communities through livelihood programs in Pakistan since 1989 and has facilitated thousands of men and women by imparting training in different demand driven trades.

In the year 2014, BEFARe continued to implement vocational skill training project, titled, “Assist Vulnerable Afghan Refugees and Host Population through Enhanced Opportunities of Quality Education and Marketable Livelihood”. The project was initiated in 2012 with the support of US State Department Bureau of Population, Refugees & Migration (PRM). BEFARe is implementing the project in collaboration with DG-TEMT, by utilizing its Training Institutes for identification of youth that are either unemployed and have little or no skills. The objectives of the project are twofold – (a) To provide quality skill training in demand driven trades

*“If opportunity doesn't knock,
build a door”*

Milton Berle



M. Amir Ali busy in a RAC training course

and (b) to create decent employment opportunities for the unemployed Afghan refugees and Pakistani host youth in Peshawar and Mardan districts.

During the reporting year, BEFARe successfully completed its first year program of multiyear grant (2013-16) target by imparting vocational and technical skills to 468 (299 Male & 169 Female) marginalized youth of Afghan refugees and local host communities enabling them to lead such a life in which they can cater to their day to day needs. The organization provided skills training to the youth in 10 different basic and advanced trades namely:

- Advanced Electrician
- Advanced Welding
- Advanced Refrigeration & Air-conditioning (RAC)
- Auto Electrician
- Basic Carpentry
- Basic RAC
- Basic Beautician
- Basic Building Electrician
- Basic Plumbing
- Basic Welding

Assessment test of the trainees:-

In order to gauge the efficacy of the offered skills training, BEFARe arranged an exam of trainee conducted by Trade Testing Board (TTB). Test was conducted in both theoretical as well as practical form. As per the result, students secured an average of 78%



A Silver lining

Asmatullah is a 19 years old Afghan boy. He lives along with his three brothers and four sisters including their old parents. Mr. Asmat Ullah narrated his past life. He said that his elder brother who is a tailor and owns his own shop was the sole bread earner of his family and it was difficult for him to support household expenses singlehandedly. Last year Asmat joined him but only as a helper, not in the capacity of a trained / skilled work force.

He always wanted to become a good tailor but could not find the right opportunity of learning in a short time. He got to know about the BEFARe-PRM training from one of his friends. He applied for the training and was selected after the test and interview. He successfully completed his training period and was very satisfied from it.

Today, Asmat's life has gone a drastic change. He is working as a tailor in his brother's shop where he stitches about three pairs of clothes per day which earns him PKR 12,000 per month. Resultantly, he has now become a major contributor in his family income generation along with his brother.

Mr. Asmat is now very much confident and happy with the skills he acquired through PRM. He said: "I was searching for a better source of income for a very long time; but was having no clear idea about it". BEFARe-PRM has helped me realize my dreams. I am grateful to BEFARe-PRM for what I am today."

Table: Details of skill training graduates of session 2013-14:-

No.	District	Institute Name	Trade	Male Graduates	Female Graduates	Total Graduates	
1	Peshawar	GATTC(Male) Hayatabad, Peshawar	Advanced Electrician	25		25	
2			Advanced Welding	22		22	
3			Advanced RAC	17		17	
4		GVTI(Male) Gulbahar, Peshawar		Basic Auto Electrician	21		21
5				Basic Building Electrician	28		28
6				Basic Carpentry	29		29
7				Basic Plumbing	22		22
8				Basic RAC	24		24
9				Basic Tailoring	27		27
10		GTVc (Female) Hayatabad, Peshawar		Basic Beautician		29	29
11		Khazana (female) Refugees Camp		Basic Tailoring		34	34
12		Naguman (female) Refugees Camp		Basic Tailoring		35	35
13		Haji Zai (female) Refugees Camp		Basic Tailoring		36	36
14	Mardan	GPI(Male), Mazdoorabad, Mardan	Basic Building Electrician	29		29	
15			Basic Plumbing	28		28	
16			Basic Welding	27		27	
17		Jalala (Female) Refugee Camp		Basic Tailoring		35	35
Total				299	169	468	

marks in the exams. TTb uploaded final result of BEFARe trainees on their official website for student's convenience and result authenticity.

Exposure Visits of trainees:-

An important component of the livelihoods program is to arrange visits of trainees to industrial units and entrepreneurs. The prime motive of exposure visits is to get the trainees get in touch with prospective employers, entrepreneurs and get first-hand knowledge of the prevalent trends in their respective trades. In this regard, seven exposure visits were conducted for the trainees of Government Advance Technical Training centres GTVC Hayatabad and Government Polytechnic Institute Takht Bhai to the industrial units in the concerned trades. The trainees met with the staff of



Female trainees in a visit to a beauty parlor

respective trades and held fruitful discussions on how they can translate their knowledge and skills in to practical form. The visits, owing to their vitality, were appreciated both by the hosts as well as the trainees.

Provision of tool kits to successful graduates:-

After the successful completion of skills training and conduction of final exam, BEFARe awarded course completion certificates and distributed tool kits among the graduates. Encouragingly, the graduates also included physically disabled enabling them to lead a more fruitful life. Certificate and tools kit distribution ceremonies for skill training graduates were held in Peshawar and Mardan.

In Peshawar, tool kits distribution ceremony was organized in which 216 male graduates of basic and advance courses received course completion certificates and tool kits. The ceremony was attended by the representatives from the community and other stake holders. Notables who attended the ceremony were Refugees Affairs Specialist from PRM,

Secretary Trade Testing Board (TTB), Director Ministry of Refugees and Repatriations (MoRR), Principal GVTC-Gulbahar, Principal GATTC-Hayatabad and Manager Program & Implementation BEFARe. Instructor of GATTC appreciated the efforts of BEFARe in the smooth and effective implementation of the skill training program. Addressing the trainees, he said: - “BEFARe has put in a lot of effort to make your lives successful by providing quality training. Now this is your responsibility to apply your skills in the field and become successful”. The skill training program will also enable the youth to earn their bread and butter in a dignified manner; he added.

Similar tool kits and certificate distribution ceremonies



Trophy being awarded to physically disabled graduate in Peshawar



Tool kits distribution at Khazana refugee village

were also organized for female graduates at Hajizai, Naguman and Khazana refugee villages Peshawar. Total of 132 female graduates received certificates and tool kits in trades of tailoring and beautician courses in Peshawar. Parents of the trained students and other distinguished guests appreciated BEFARe-PRM skill training program initiative and termed it as pivotal for earning their livelihoods. BEFARe envisages that the provision of certificates and tool kits will assist the outgoing graduates to either start up their own businesses or get a decent job placement both in Pakistan and in Afghanistan.

Follow-up of graduates:-

To evaluate the impact of the vocational skills program, BEFARe made follow-up visits to the graduates of its previous and current phase in the markets/workplaces. During the follow up visits, BEFARe pleasantly observed that majority of the male graduates of Government Advance Technical Training Centre (GATTC) Hayatabad and Government Polytechnic Institute (GPI) Takhtbhai had started working with different employers while others had set up their own minor businesses. When it came to female trainees, most of the training graduates of different centres have also started work within the refugee camps at their homes and are now earning a decent income by stitching different design clothes in their respective camps. More importantly, they have also started receiving orders from outside the camp which has enhanced their motivation towards their job.



BEFARe team taking feedback from RAC course employed graduate in Peshawar market



CE BEFARe presenting cut off machine to Principal GPI Takhtbhai, Mardan

BEFARe management team monitored vocational skill training program:-

On March 31st 2014, CE BEFARe visited Government Polytechnic Institute (GPI) Takhtbhai Mardan to monitor ongoing vocational skill training program. CE BEFARe met GPI Principal who briefed the management about the progress made so far in the training program. Principal GPI lauded BEFARe determination and the practical steps taken so far for the implementation of skill training program in Mardan district. Principal GPI also thanked BEFARe for providing 15 KWV generator, cut off machines, networking facilities in the computer lab and other needed machines/tools.

PRM Representative Field visit:-

In May 2014, PRM representative visited Peshawar to monitor the ongoing activities of the project. PRM

representative visited both male and female training centers in Peshawar and met with the contemporary and ex. trainees of the training program. He also visited different trade classes and monitored the training methodology of different trades. Project Manager briefed PRM representative about the methodologies incorporated in the training program. PRM representative held fruitful discussions with the trainees and was pleased to note that a vast majority of ex-students were employed. He gave the credit to BEFARe for economic revival of the needy communities and expressed his confidence that the organization will continue to support and empower the vulnerable host and Afghan communities for their upwards social inclusion.



Plumbing course trainees briefing CE BEFARe about models made by trainees during training

Exhibition of products in Refugees camps:-

In February 2014, BEFARe organized one day exhibition at Hajizai, Naguman and Khazana Afghan refugee camps Peshawar. The aim of the exhibition, amidst training, was to develop linkages of skilled trainees with the community and market for income generation of the trainees. All female trainees of three established centers and a large number of females from refugee camps and adjacent areas participated in the exhibition. Females from refugee camps and adjacent areas showered their praises for the trainees' commendable work in a short span of time and showed their fondness for the products. Different products, including baby sleeping bags, ladies and kids garments - prepared by female trainees in the initial two months of the training - were

displayed at respective centers. Such was the appreciation of the goods that majority of the products were sold out during the exhibitions which was a reflection of the trainees fine art work and successful progression of the project activities.



WOMEN EMPOWERMENT



Women comprise more than 50 percent of Pakistan's total population. Despite this, on an average, the situation of Pakistani women vis-à-vis men is one of systemic gender subordination, albeit there have been attempts by the government and enlightened groups to elevate their status in society. BEFARe, through its various developmental programs, has been a staunch

advocate of women empowerment and has implemented several multi-dimensional projects aiming to up lift the status of women and to satiate their innate desire of equality along with their male compatriots as per the law of the land.

Provision of technical and Vocational skills:-

In the year 2014, BEFARe continued with its endeavours to assist vulnerable Pakistani women including Afghan women through Enhanced Opportunities of Quality Education and Marketable Livelihood project supported by PRM. During the reporting year, the organization successfully completed the first year of the project by imparting vocational and technical skills training to underprivileged youth women of rural Afghan refugees as well as local host communities in district Mardan and district Peshawar. BEFARe imparted skill training to the females in the traits of basic beautician and basic tailoring.



Female trainees participating in tool kit distribution ceremony



A view of tool kits distribution to the successful trainees

Final assessment of trainees:-

After completion of skill training, all the female trainees appeared in the final exam conducted by Trade Testing Board (TTB). In the exam, trainee's skills were assessed by examiners through written test and practical demonstration in relevant trades. According to result analysis, students overall achievement in final exam was recorded at over 80%. TTB uploaded final result of successful trainees on their official website as well.

Tool kits Distribution Ceremony:-

After the successful completion of six month training in the female centers, the trainees were awarded certificates and toolkits. Female staff distributed certificates and toolkits to the female trainees in the ceremony held within refugee camps in Peshawar and Mardan.



A view of tool kits distribution to the successful trainees

Participation in WBDC Exhibition:-

In January 2014, Women Business Development Centre (WBDC) exhibition was held in Peshawar. In the exhibition, the trainees displayed the designed suits. Trainees of the project from various camps visited the exhibition and expressed their keen interest to continue participation in such activities in the future as well. The trainees were of the opinion that such exhibitions were fruitful in developing linkages with the business communities for those females who are working from home and have limited access to market. The trainees further elaborated that the continuation of such programs and exhibitions encouraged them to continue their work with utmost dedication.



A view of WBDC exhibition

Exhibition in refugees Camps:-

One day exhibition was arranged by BEFARe livelihood female team in all the three camps based training centres in Peshawar and Mardan. The objective of this exhibition was not only advertising of the products but also mobilization of the community for vocational training and development of liaison with the market. All the participants were appreciative of the work of the female trainees and were of the view that skill and education can address their issues of unemployment and poverty enabling them to lead a normal life where they have the means to address their day to day issues.

Female SMC trainings:-

SMC's training session in progress School Management Committees (SMC) of BEFARe schools under UNHCR support are an integral part of our school operations.



Participants showing interest in the displayed out fits of the trainees

Both male and female SMCs for each of 127 schools owns and contribute as per their potential to manage school affairs in collaboration with school management. An important component of BEFAre's women empowerment theme has been continuous mobilization and training of female School Management Committees (SMC's). In the year 2014, a total of 28 female SMC's were trained in the 36 BEFAre administered schools in Abbottabad, Timergara, Mardan, Peshawar and Kohat. The SMC's were provided various types of trainings including, assessment

No nation can rise to the height of glory unless your women are side by side with you.

Muhammad Ali Jinnah, 1944

trainings, capacity building trainings, refresher trainings etc. These trainings were used to motivate the community for promotion and enhancement of girl's education. Throughout the year, the SMC's continued to motivate the female community members for their active participation in the management of school affairs. Generation of school funds, paying of utility bills, ensuring regular provision of stationery etc. is all carried out by the community owing to the efforts of female SMC members. The female SMC members regularly visited the schools not only to monitor the administrative aspects of the schools but to also keep a check on the girls enrolment and dropout rates. The effectiveness of the training of SMC's is evident from the fact that during the reporting year the community generated indigenous funds of over 2 lac which were being utilized for schools maintenance and administrative matters.



SMC's training session in progress

OTHERS:-



District Administrator, Commissionerate for Afghan Refugees (DA-CAR) visits BEFARe administered schools in Peshawar:-

On 19th February 2014, Mr. Siddique Ahmad, DA-CAR, Peshawar paid a joint visit with Project Manager Education and Health Mr. Syed Wajid Ali Shah to BEFARe administered schools i.e MSB-152 and MSG – 098 located in Kababyan Afghan Refugee Camp. They checked the school record and monitored the classes. DA-CAR appreciated BEFARe's efforts in providing qualitative education to the vulnerable Afghan community. During his visit to one of the female upgraded schools i.e MSG-098 Kababyan, DA-CAR observed the teachers giving lectures in the classes and asked some questions from the students in different subjects, which the students responded satisfactorily. He also met with the students of grade-7 and

encouraged them to work hard so as to excel in their studies. In the end, DA-CAR praised the efforts of BEFARe - COPE - PRM in providing opportunities to the needy students for educational enhancement.

BEFARe conducts educational competitions at its schools:-

On April 17 2014, the 3rd Annual Education Competition was held at BEFARe office in Peshawar where five male and five female students of grade-6 represented their respective sub-centers from Peshawar, Mardan, Kohat, Abbottabad and Timergara. Cash prizes were awarded to the individual male and female position holders along with gift packs while the best Sub Centers were awarded with trophies along with certificates. Mr. Shakir Ishaq, CE BEFARe in his closing remarks congratulated all the contestants who made it to the final round of the



Prizes distribution among students

competition and expected that such competitions will encourage the students to work harder in the future and set a precedent for the upcoming students. CE BEFARe also thanked and congratulated the teachers, parents and the Sub Centers field staff for their hard work.

BEFARe conducts meeting with NADRA officials:-

In April 2014, BEFARe-FAFEN staff held a meeting with NADRA officials at District NSRC Attock. The staff briefed NADRA district office in-charge about FAFEN CNIC registration campaign. NADRA officials were apprised that CRG members of BEFARe-FAFEN and volunteers from different constituencies identified the low CNIC registration pockets. The list of low CNIC registered areas were shared with NADRA (mobile registration van) to facilitate women and marginalized communities to make their CNIC so they can also register their votes. NADRA officer in charge assured his



A view of female trainees in Haji Zai, Peshawar

full cooperation and support to BEFARe-FAFEN and informed that the MRV field plan has been approved by NADRA headquarters. He also gave his consent to provide NARDA MRV for registration purpose.

BEFARe conducts meeting with District Election Commissioner Attock:-

BEFARe- FAFEN Attock staff conducted a meeting with District Election Commissioner Attock in April 2014. Relevant stakeholders, including different political parties representatives and CBO's representatives were also invited. BEFARe-FAFEN staff briefed the DEC Attock about FAFEN-BEFARe program objectives, voter education campaign and CNIC registration through NADRA MRV (Mobile Registration Van) facilitation. The District Election Commissioner (DEC), Attock appreciated FAFEN-BEFARe efforts to facilitate the downtrodden community for voter registration and mobilization to ensure their participation in local bodies' elections. DEC Attock also ensured the meeting attendees that ECP will support BEFARe staff in voter education campaign. He also told the participants that ECP will register the vote of a citizen who appears personally in ECP office with his CNIC. It was also decided that this awareness campaign will be highlighted in the media.

PRM representative pays monitoring visit to Hajizai and Naguman:-

On May 14 2014, Refugees Affairs Specialist (RAS) Mr. Wahid Gul from PRM visited Peshawar to monitor the activities of PRM Livelihood component, which includes the current phase and follow up of graduates of previous phase. He visited female training centers of Hajizai and Naguman as well as the male training center in GTVI, Gulbahar. On his visit to Hajizai and Naguman, Mr. Gul met the current and former trainees separately and held detailed discussions with them. He was satisfied when he came to know that that most of the former graduates were employed at different places or had set up their own businesses after their graduation. He also visited the male Government Vocational Technical Training center (Gulbahar) to meet the current trainees of different trades where he was briefed at the employment status of former and current trainees.



A view of World's Refugee day celebration

BEFARe observes World Refugees Day at its administered schools:-

BEFARe, as a leading education agency for refugees in Pakistan, is persistently playing a pivotal role in refugee education with the support of UNHCR. As a legacy, BEFARe observes all important national and international events regularly in refugee camps. World Refugee Day was observed by BEFARe on June 20th

2014 with active involvement, physical and financial support of School Management Committees (SMCs) at different places. The purpose of the event was to show solidarity with the Refugees and to invite the attention of the rest of the world to refugees conditions and the need of continuous support to them. The event was observed with great enthusiasm by the camp elders, teachers, and students who enlivened the occasion with their speeches and skits. Representatives of other NGO's also participated in the events to express their solidarity with the refugees.

BEFARe staff attends annual meeting/team building event at Dunga Gali:-

BEFARe, as a tradition, regularly takes its employees on refresher tours to cultivate stronger team spirit among them. The tour encompasses multi nature activities which takes place in a friendly atmosphere. In August, 2014, BEFARe organized a team building event at Dunga Gali from 29 to 31st August 2014. A total of 96 staff members from Main Office Peshawar and Sub Offices from across the country participated in the team



Group photo of BEFARe staff at Team Building event in Dunga Gali



PRM representative in his visit to Peshawar

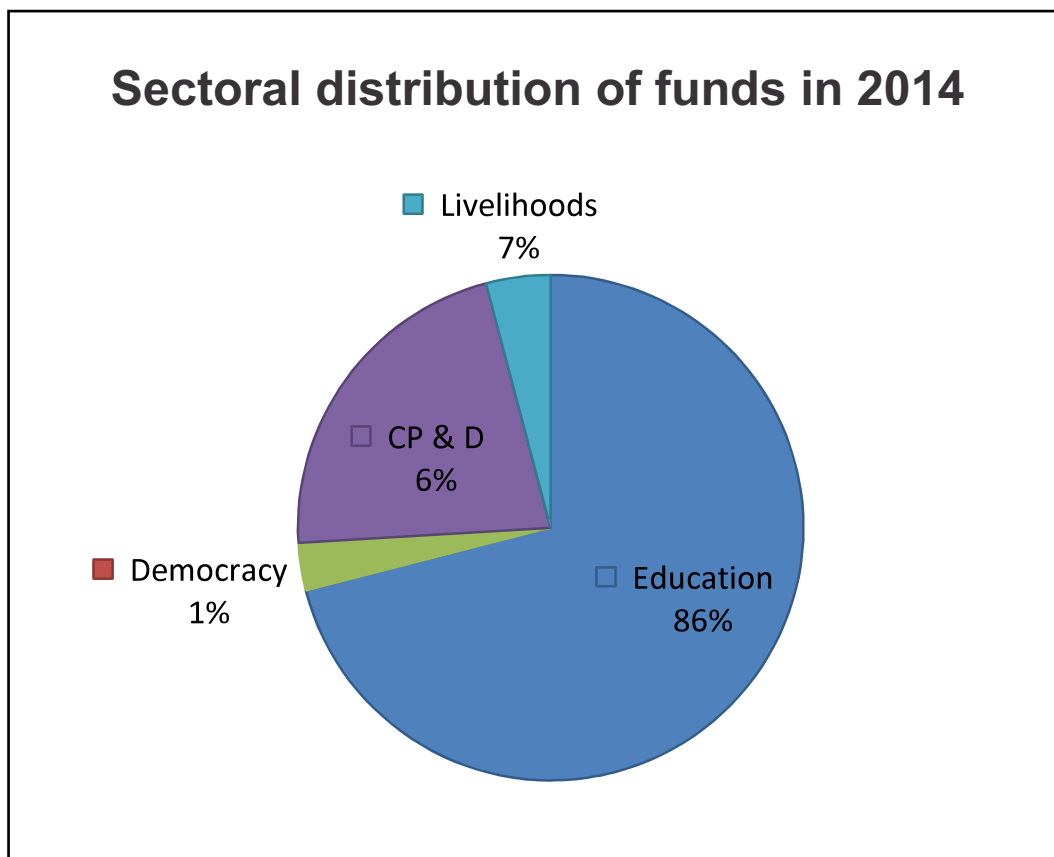
building event. BEFARe staff members, including the management team, participated in different interactive activities and thoroughly enjoyed the trip.

PRM representative pays field visit:-

BEFARe was awarded a project by PRM in September-2013 to “assist vulnerable Afghan refugees and host population through enhanced opportunities of quality education and marketable livelihood”. Through this intervention, a great number of refugees have become

economically independent and have now become major contributors in their families' economic stability. On October 29th and 31st 2014, PRM representative, RAS Mr. Wahid Gul visited Mardan and Peshawar. The purpose of the visit was to monitor BEFARe Livelihood Skill Training Program graduates of phase one and two. Mr Gul was satisfied with the livelihood skills training program and expressed his full support for project activities in the future as well.

SECTORAL DISTRIBUTION OF FUNDS IN 2014



BEFARe Offices in 2014

BEFARe Main Office (Peshawar)

153, Old Bara Road
University Town, Peshawar
Phone: (091) 570 2955, 584 0631
Fax: (091) 584 1047

BEFARe Country Office (Islamabad)

House # 253 Street 19 G/10-2
Islamabad
Phone: (092-51) 2212210

BEFARe Regional office (Mardan)

Email: ghayas@befare.org
House#81, Street#1, Sector-C,
Sheikh Maltoon Town, Mardan
Phone: (092-937) 880451

BEFARe Regional office (Timergara)

Email: aftar@befare.org
Near Sharja Masjid Tehsil and post Office
Timergara District Lower Dir
Phone: (092-945) 821503

BEFARe Regional office (Abbottabad)

Email: farman@befare.org
Supply Bazaar, Gulshan Abad Colony,
Iqbal road, new Kiani Chock Abbottabad
Phone: (092-992) 340152

BEFARe Regional office (Kohat)

Email: falakniaz@befare.org
House#348-A, Sector 4,
Opposite Sector 9 Market, KDA Kohat.
Phone: (092-922) 514119

BEFARe Regional office (Karachi)

House # 129/P, Block 2,
P.E.C.H.S,
Karachi
Phone: (092-213) 4300157

BEFARe Regional office (Multan)

House # 5 Sabahat Street Near
Allied Bank Limited, Neel Kot Bosan Road,
Multan
Phone: (092) 61 622387

BEFARe reserves all rights of ownership of the original material in this report, but readers are allowed to make use of it for non-commercial purposes in the course of development work. However, proper acknowledgment is must if report is so used, and a copy of any document prepared with the assistance of original material quoted from this report be sent to BEFARe for inclusion in its resource centre.



BEFARe Main Office (Peshawar)

153, Old Bara Road, University Town, Peshawar
Phone: (091) 570 2955, 584 0631, Fax: (091) 584 1047