



# **BEFARe** **ANNUAL REPORT** **2015**



Basic Education for Awareness, Reforms and  
Empowerment/Basic Education For  
Afghan Refugees

# **ANNUAL REPORT 2015**

## **BEFARe**



Basic Education for Awareness, Reforms and  
Empowerment/Basic Education For  
Afghan Refugees

---

## TABLE OF CONTENTS

<b>List of Acronyms</b> .....	<b>II</b>
<b>Message from the Chief Executive</b> .....	<b>01</b>
<b>Chapter 1:</b> Thanks to our Donors and Partners in 2015 .....	02
<b>Chapter 2:</b> About BEFARe .....	03
<b>Chapter 3:</b> Education .....	05
<b>Chapter 4:</b> Community Participation and Development .....	11
<b>Chapter 5:</b> Monitoring & Evaluation .....	22
<b>Chapter 6:</b> Sustainable Livelihoods .....	25
<b>Chapter 7:</b> Women Empowerment .....	33
<b>Chapter 8:</b> Others .....	37
<b>Chapter 9:</b> Sectoral distribution of Funds in 2015 .....	43

This report and the subsequent updates are available at [www.befare.org](http://www.befare.org)

---

## LIST OF ACRONYMS

AAR	Association for Aid and Relief
BEFARe	Basic Education For Awareness Reforms and Empowerment/Basic Education For Afghan Refugees
PRM	Bureau of Population, Refugees and Migration
CAC	Community Advisory Committee
CAR	Commissionerate of Afghan Refugees
CBO	Community Based Organization
CDA	Community Development Approaches
CIDA	Canadian International Development Agency
CMs	Community Motivators
CNIC	Computerised National Identity Card
COPE	Community Oriented Primary Education
CP&D	Community Participation and Development
CRG	Constituency Relations Group
CRP	Constituency Relations Program
CVSP	Conflict Victim Support Program
DD	Deputy Director
DFID	(UK) Department for International Development
DGG	District Governance Group
DG-TEMT	Director General- Technical Education and Manpower Training
EC	European Commission
ECP	Election Commission of Pakistan
EFA	Education For All
EGRA	Early Grade Reading Assessment
EMPT	Emergency Medical Professionals Trainings
ERT	Emergency Response Training
FAFEN	Free and Fair Election Network
FATA	Federally Administered Tribal Areas
FDMA	Federal Disaster Management Authority
FE	Formal Education
FEO	Field Education Officers
FES	Field Education Supervisors
FGD	Focus Group Discussion
FI	Food Items
FPT	Focal Point Trainings
GATTC	Government Advance Technical Training Centre
NAVTTTC	National Vocational & Technical Training Commission
GBV	Gender Based Violence
GEP	Gender Equity Program
GPS	Global Positioning System
GTVI	Government Technical and Vocational Institute
GVTC	Government Vocational and Technical Centre
HMC	Hayatabad Medical Complex
ILO	International Labor Organization

---

IOM	International Organization for Migration
IOs	International Organizations
IP	Implementing Partner
IRD	International Relief and Development
KTH	Khyber Teaching Hospital
LOG	Logical Framework
LRH	Lady Reading Hospital
MRV	Mobile Registration Van
MORR	Ministry of Refugees and Repatriations
NADRA	National Data base and Registration Authority
SBA	Small Business Assistance
MEP	Monitoring and Evaluation Program
MSB	Middle School for Boys
MSI	Management System International
MSTO	Monitoring Short Term Observers
MT	Master Trainer
NFI	Non Food Items
PDMA	Provincial Disaster Management Authority
PEI	Poverty Eradication Initiative
PHAST	Participatory Hygiene and Sanitation Techniques
PHED	Public Health Department
PRP	Pakistan Reading Project
PSG	Primary School for Girls
RAS	Refugee Affairs Specialist
PTC	Parent Teacher Council
RTI	Right To Information
SMC	School Management Committee
SC	Sub Centre
SMT	Senior Master Trainer
SOM	Sub Office Manager
SRSP	Sarhad Rural Support Program
STO	Short Term Observers
TAF	The Asia Foundation
TOT	Training of Trainers
TTB	Trade Testing Board
UNESCO	United Nations Educational Scientific and Cultural Organization
UNHCR	United Nations High Commissioner for Refugees
UNICEF	United Nations International Children Education Fund
USAID	United States Agency for International Development
USG	United States Government
WBDC	Women Business Development Centre
WG	Working Group
WRD	World Refugee Day
YRC	Youth Resource Centre

## MESSAGE FROM THE CHIEF EXECUTIVE



I am pleased to present BEFARe's Annual Report for the year 2015. The report judiciously reflects the progress made under various projects operational with the financial support of various development agencies. It elaborates the efforts of BEFARe and its existing development strategy that revolves around institutional

development and capacity-building components. In the year 2015, BEFARe made significant strides in catering to the needs of marginalised communities including but not limited to Afghan Refugees, Host communities, Women and Children. Acknowledging the gravity of the situation and the crisis our people are confronted with on daily basis, the organization further strengthened its resolve to maximise its outreach to those who are still denied the essential services and protection every one aspires to avail.

The final year of the Millennium Development Goals was a time of pride for BEFARe as its team and management contributed to achievements to its various indicators within the national framework. As the global community agreed to new targets for Sustainable Development Goals (SDG's) 2030, BEFARe has embarked on an ambitious new plan to ensure every citizen has the opportunity to live a healthy, productive and fruitful life.

In the reporting year, BEFARe provided support to the needy populace all across the country including the four provinces and Federally Administered Tribal Areas (FATA). Our extensive expertise in Education, Health, WATSAN, Women Empowerment, Democratization, Third Party Monitoring, and perhaps most importantly, our commitment to supporting the needy people to shape their own solutions was instrumental in alleviating their sufferings. In this regard, BEFARe's commitment in staying and reaching out to vulnerable communities and ensuring the use of grants transparently in its letter and spirit is something we're extremely proud of as an organization.

BEFARe's efforts would not have borne fruit without the support of its donors. The assistance extended by our partners has always been a key push factor in achieving our goals and desired outcomes. I am also grateful to our Board of Governors for continuous guidance and support. The entire team, including HO staff, Regional staff, support and auxiliary; all deserve praise for their dedication and belief in their work. I owe them special thanks and am sanguine that we will continue our efforts with same zeal and passion in the coming years.

I am confident that the progress and review of results that BEFARe as documented in this report will be useful for the development practitioners, rural support programmes, communities, Government line departments, and other development support agencies working in Pakistan in general and Khyber Pakhtunkhwa in particular.

Chief Executive

## THANKS TO OUR DONORS / PARTNERS IN 2015

The continuous assistance of donors and international community is pivotal for the uplift of needy communities. In the year 2015, BEFARe programs were supported by different donors, development partners and government stakeholders for which we are grateful to them for their support and trust in BEFARe team. To continue with our efforts to assist the beneficiaries, we would like to renew our appeal to the donors for enhanced support that is commensurate with escalating humanitarian needs. BEFARe is optimistic that our

present and prospective donors will stand by us in our commitment to extend every possible support to the susceptible and unfortunate ones. The continuity of our partnership is need of the hour and if we are successful in evolving a long term partnership, its impact will be vibrant on the outlook of the beneficiaries. If we can materialize this dream of ours, not only the life quality of the poor will be enhanced, Pakistan's ranking in the development Index will also get a boost.



## WHERE WE WORK

BEFARe programs are spread in three provinces and FATA. Our Main office located in Peshawar has organizational support from seven offices located throughout Khyber Pukhtoonkhwa (KP), Punjab, Sindh and Islamabad.

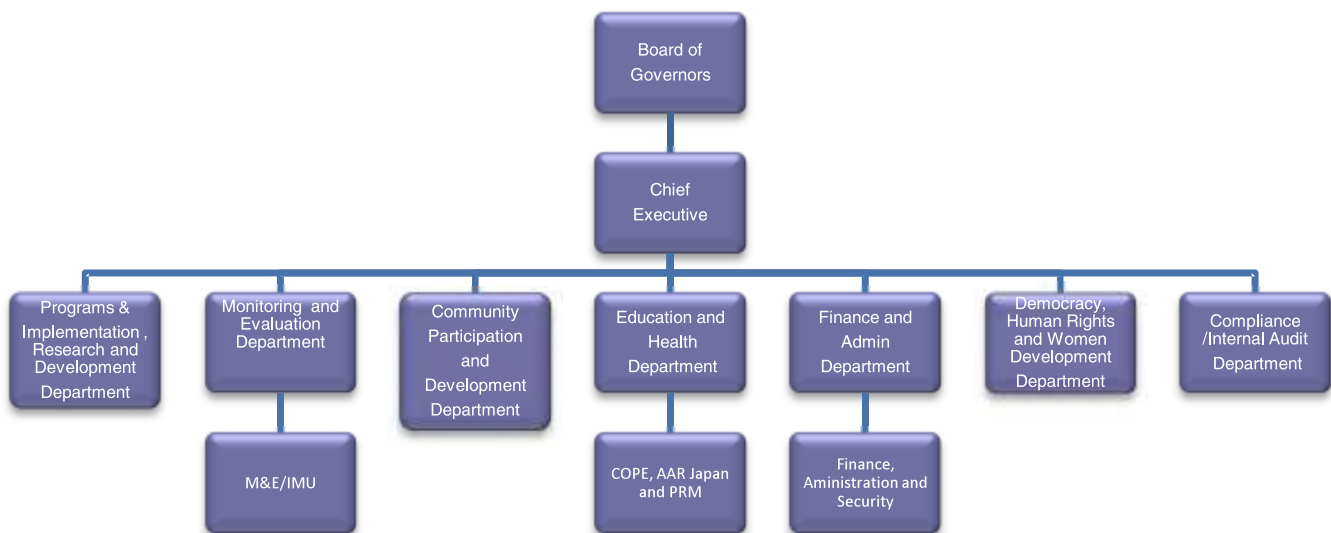
**ABOUT BEFARe**

**B**EFARe established in 1989, as Pak-German bilateral project and later transformed into an independent NGO in 2003 is well known in the development sector in Pakistan. BEFARe over the years, due to its efficient service delivery and professionalism has earned confidence of the donors and expanded geographically as well as thematically. BEFARe has actively worked with Pakistan's federal, provincial and local Government departments and structures to successfully implement multi-sectoral programs in education, health, governance, energy conservation, survey and research democratization, irregular migration, sanitation, micro-finance and others, with the support of all the leading donors operating in

Participation & Development, Programs and Implementation, Research and Development, Democracy, Human Rights & Women Development and Monitoring & Evaluation department headed by respective managers. A Board of Governors comprised of eminent personalities is the top body of the organization.

BEFARe currently has seven sub offices which assist the Head office (located in Peshawar) for interventions in every part of the country. Each sub-office is a full-fledged administrative setup established to support all kinds of activities planned for that specific area. BEFARe has approximately 1,200 staff members placed all over the country,

**Organizational Structure of BEFARe**



Pakistan, namely; BMZ, EC, World Bank, World Vision – Pakistan, South Asia Regional Initiative, UNHCR, USAID, PRM, MSI, IRD, ILO, CIDA (AREP), CIDA(PIF), TAF, DFID, UNICEF, UNESCO, IOM, AAR Japan and others. BEFARe has a range of developmental professionals at its strength rendering their services under the supervision of Chief Executive, separated in to different departments; comprised of Finance & Administration, Education & Health, Community

working on different projects. BEFARe has sub offices in Mardan, Abbottabad, Timergara, Lahore, Multan and Karachi, while the country office is located in Islamabad. Each sub-office is supported through a Manager, Field Officer and Community Participation and Development personnel in addition to other administrative staff. It is provided with separate vehicles for monitoring and support of activities in their respective areas. Apart from the staff on roll, BEFARe has a database of qualified



---

personnel who have served BEFARe previously in various interventions and can be mobilized and taken on board within a short time if BEFARe needs additional staff for new projects that it signs with donors.

BEFARe has a well-established finance department which ensures regular flow of funds for various departmental activities. It also ensures that the financial control regarding disbursements of funds in accordance to various donors needs are systematically reported to the donor organizations. Furthermore, it supervises and ensures the internal accounting control of the organization through activities like book keeping, on-time disbursement of funds as and when required for the programme activities. Finance department is also responsible for final budgeting of proposals, for submission to national and international donor agencies.

BEFARe has registered accounting software i.e. quick Books Enterprise Edition, installed in an independent finance server, administered by the Internal Audit & Compliance Officer. BEFARe has developed its own accounting manual by a reputable Chartered Accountants Firm which outlines detailed policies and procedures set out to be used in accounting for the organization & donors' financial transactions.

The finance department is enriched with qualified and eminent professionals who can handle any amount of funds efficiently and accurately. The department in 2010 and 2011 handled USD 5.43 Million and USD 10 Million respectively, provided by various funding agencies. In the year 2015, the department efficiently handled projects worth USD approx. 4 Million.

BEFARe has an efficient school funds management system that allows every stakeholder to have access to and monitor use and distribution of funds of each school, hence using the concepts of public accountability and audit for local development. The community representatives and elders are trained regularly for effective participation, resulting in increased sense of ownership. During 2015, the Community Participation and Development Department has generated and utilized around PKR approx. 17.4 Million on construction and repair of classrooms, verandas, roof replacements, toilets, and wells for the community. These readily replicable best practices have been continuously improved by international staff and visiting consultants of international repute, over a long period of time.

## Our Vision

We successfully promote institutional cooperation which contributes to sustainable social and economic development.

## Our Goal

To improve and contribute towards better living standards of the identified displaced and underprivileged communities through interventions such as quality education, vocational & skills training, health, sanitation, microfinance, enterprise development, poverty alleviation and socioeconomic development initiatives.

## EDUCATION

### Community Oriented Primary Education:-

Pakistan continues to be the largest host of protracted Afghan Refugee population under UNHCR's mandate with its 1.5 million registered Afghan refugees and approximately 1 million unregistered Afghan refugees. Majority of the Afghan refugee population resides in Khyber Pakhtunkhwa (62%) which makes it imperative to provide and maintain protection services consisting of basic health care, legal assistance, registration / documentation and primary education. Literacy rates among the afghan refugee remains consistently low, in particular amongst women and girls where the female literacy rates are as low as 7.59% and a net enrolment rate of only 29%, with only 30% of the enrolled children being girls.

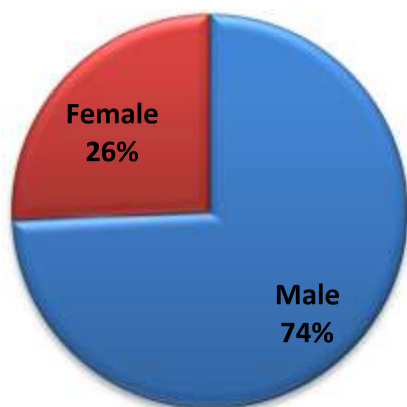
*The only person who is educated is the one who has learned how to learn and change.*

**Carl Rogers**

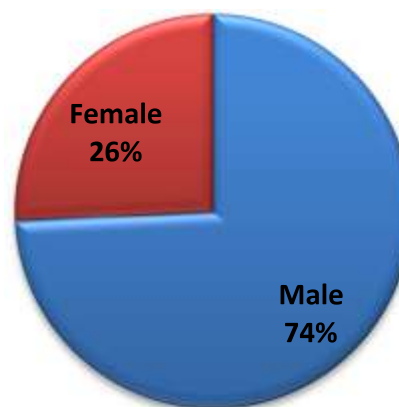
the middle schools. When it came to gender bifurcation, 35,216 boys and 15,553 girls were undertaking their studies at the primary level. In the middle section, 1562 boys and 544 girls were enrolled in grade 8.

BEFARe has been providing its educational services at 54 refugee villages through its 127 schools. These schools are managed by five sub-offices namely Abbottabad, Kohat, Mardan, Peshawar and Timergara. Out these 127 schools, 83 schools were

#### Middle Level Enrollment



#### Middle Level Enrollment



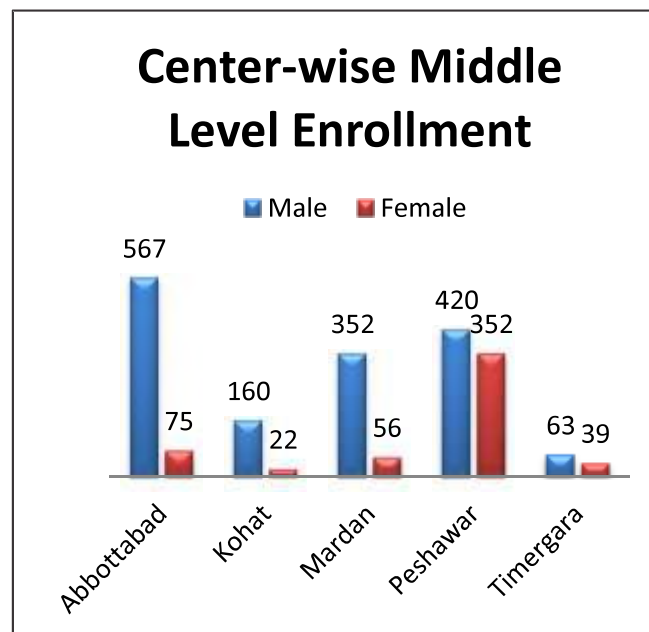
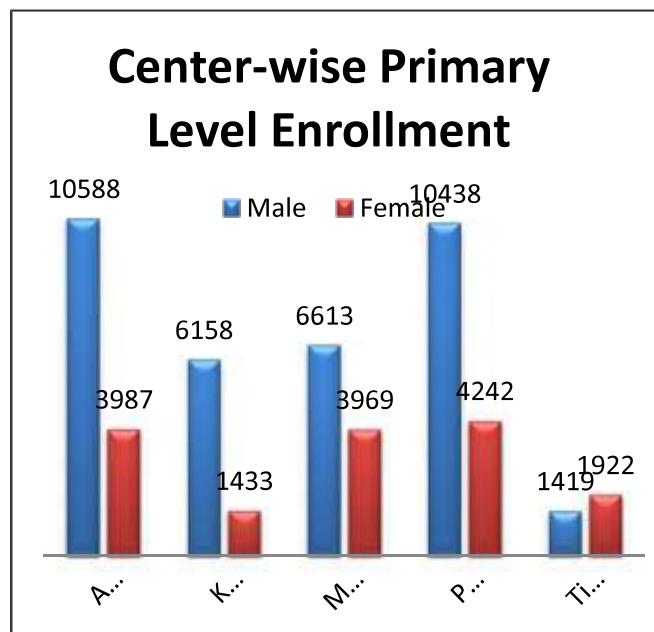
Continuing with the UNHCR's protection mandate of providing primary education, BEFARe continued to implement its education program throughout KP to the afghan refugees within the refugee villages through its Community Oriented Primary Education (COPE) project. Under this project, the student enrolment in December 2015 was recorded at 52,875 where 50,769 students were enrolled at primary level and 2,106 students were catered to in

upgraded to middle schools in 2010 and 2013 through UNHCR and PRM funding respectively. As per December 2015 statistics, the highest number of student enrolment is recorded at Peshawar where 14,680 and 772 students were enrolled at primary and middle level while Timergara has the lowest number of enrolled students with 2,341 and 102 students in primary and middle section.

## Teacher Training:-

Teacher training is an integral part of professional development as new concepts and techniques are introduced and practised in the pedagogical field. BEFARe prides itself in continuous provision of pedagogical techniques to its 926 teaching staff through different means; may it be formal training, on-job trainings or focal points. At the same time, BEFARe through its endeavours also exploit different funding sources to provide trainings in different areas of pedagogy and class management. A 3-days ToT on Safe School Learning Environment (SSLE) was organized by UNHCR, Peshawar at

teachers, Head Teachers, Field Education Supervisors (FES), Field Education Officers (FEO) and Master Trainers (MT) from different RVs of KPK. The ToT focussed on strengthening the participants understanding, knowledge skills and techniques for creating and maintaining a safe learning environment in the field of education. This was done through interactive lectures, discussions, group work and presentations. On the 3rd and last day of the ToT, certificates were distributed among the participants by Mr. Jacques Franquin, Head of UNHCR, Peshawar.



Pakistan Academy for Rural Development (PARC), Peshawar. This ToT was attended by 30 (16 male and 14 female) BEFARe staff members including



*ToT training in progress*

Besides three day training, one-day training on the same topic was also conducted on December 26-28, 2015 for 860 BEFARe teaching staff at 30 training centers including nine (09) female centers. During the one day training, participants learnt different strategies to avoid conflict, violence, abuse and exploitation at refugee schools as these schools cater to vulnerable children who have been living in protracted refugee conditions for a long time and may not enjoy a lifestyle which is akin to being enjoyed by others. This training also discussed in detail approaches to ensure how to create an environment for the students/children where they will acquire educational skills in a safe and conducive environment.



*Teacher training in progress*



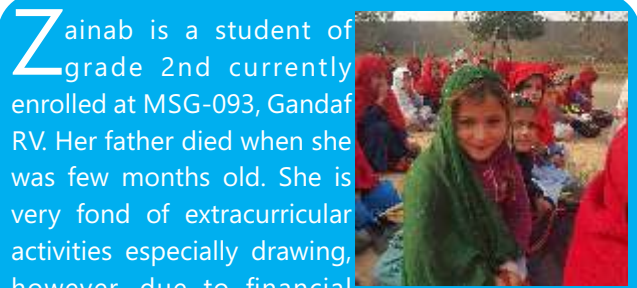
*Teacher training in progress*

**Focal Point Training:-**

In 2015, 632 focal point sessions/trainings were conducted for the teaching staff, with majority of these sessions carried out by Field Education Supervisors (FES). Various topics were covered in these session including subject learning outcomes, post assessment data collection, multiple class management, notebook checking, paper setting, etc.

During the reporting year, 6,914 lessons were also monitored by the FES's and Head Teachers (HT's) and the weakness identified during those monitoring sessions were later on covered in the aforementioned focal point sessions/trainings. These monitoring sessions were also productive in identifying subjects where students faced

challenges in learning and for this purpose, in 2015, 2093 extra classes/sessions were held at BEFARe schools for 6,048 students of grade 1 to 3 in Pashto and Mathematics.



Zainab is a student of grade 2nd currently enrolled at MSG-093, Gandaf RV. Her father died when she was few months old. She is very fond of extracurricular activities especially drawing, however, due to financial hardships she couldn't afford to participate. She narrated: "I didn't have enough money to buy a single pencil while my uncle would buy things for his kids." It was her mother who pushed her to get education in order to build a better future for herself. Her mother got her enrolled at the nearby female school run by BEFARe in partnership with UNHCR where education is free and students are also given free books and classroom stationery. According to Zainab, "I can now draw as many things I want with the color pencils and stationery provided to me by BEFARe and UNHCR". She wants to become a teacher as her teachers are a great inspiration for her. At home there is no one who can teach her or help out her in doing her homework. But her teachers assist her with her studies and always encourage her to come to school and continue her studies. The support extended by BEFARe – UNHCR has made her optimistic about her future.



*Focal Point training in progress*

### **Educational Competitions:-**

Educational competitions play an important role in academic achievements because it spurs students to pursue excellence. Continuing with its tradition of encouraging excellence, in 2015, 166 educational competitions were held in which 2,660 students participated. Students from both primary and middle classes participated in these competitions which were held on inter-school and inter-zonal level. Trophies were also distributed amongst the successful students. As mentioned earlier, the purpose of these competitions was to increase the students' efficiency, their confidence and interest in the studies.



*Students with their trophies*

### **Schools Repair and Rehabilitation:-**

In 2015, Pakistan was confronted with several natural calamities in the form of earth quake and floods which wreaked havoc in several areas. Considering the fact that 40% of the BEFARe schools have mud structure while approximately 10% are mix structures, these BEFARe schools sustained structural damages making their use a

precarious option. With UNHCR funding, 50 schools were selected for repair and maintenance, thus, creating a safe learning environment for the students as well as fulfilling one of UNHCR's and BEFARe's core values. Apart from UNHCR funding, Danish Refugee Council (DRC) also partnered with BEFARe and constructed new BEFARe school buildings at Ghamkol and Gandaf RVs.



*A view of damaged infrastructure at the school*

Zakia is one of the top students in her class, currently studying in Grade-8 at MSG-048, Khazana RV. She took a two years break from her studies as her father, the sole breadwinner of the family, was diagnosed with cancer. As being the eldest child out of eight siblings, she had to take over her mother's household responsibilities, who started tailoring business to financially support the family. However, last year her teachers' encouraged her to re-join the education system considering the fact that she will get free books, stationery and uniform to compliment her studies. Provision of UNHCR funded free educational materials proved to be an immense incentive and she got enrolled in grade-8. Today she can't be anymore thankful and happier for being provided with the opportunity to continue her studies.



### UNHCR Support to Education:-

In April 2015, BEFARe signed a contract with UNHCR under RAHA program for the implementation of project in two schools of Mardan district i.e GGPS Kagaan and GPS Kagaan. The target population of both the schools as well as village Kagaan comprised of both the hosting communities as well as the Refugees. Under the project, six additional class rooms were constructed in GPS Kagaan along with eight latrine units; while in GGPS Kagaan, four new class rooms were constructed along with four latrine units. In total, BEFARe constructed ten additional class rooms and twelve latrine units to facilitate the deserving students who hitherto had not seen such facilities and were desirous of such intervention which would alleviate the status of their schools. Apart from constructing new infrastructure, the old infrastructure of both the schools was also rehabilitated and was made look like a new one. The support extended by UNHCR has helped to



*A view of newly constructed class rooms at GPS Kagaan*

curtail the student ratio per class in both the schools from an average of sixty five students per class to the nationally accepted level of forty five. In addition to that, the provision of more space to the students has drastically improved the learning atmosphere of the class rooms and the students are now exhibiting more interest in their renewed and



*Newly constructed washroom facility at GGPS Kagaan*

newly constructed classrooms. Their level of interest in the education is measured by the decrease in the dropout rate of the students as well as new enrolment in the new academic session.

Apart from constructing new class rooms, BEFARe

also provided new furniture including desks and chairs to the students of both the schools. Previously due to obsolete / limited availability of desks and chairs, students used to sit in the veranda and other available spaces for attending the classes but now due to the provision of new furniture, the students are attending classes in the class rooms which has transformed the outlook of the students as they have found an appropriate environment for their classes.

Apart from hard component, the project also entailed soft activities like Health and Hygiene sessions and PTC trainings. In this regard, eight Hygiene sessions were conducted wherein students were provided in depth training on matters pertinent to their daily health and hygiene. During the sessions, children were provided training on the important aspects of personal hygiene including hand wash techniques, tooth brush techniques, health benefits of daily bath etc. The students showed keen interest in adapting to health and hygiene standards which was evident when the



*Children utilizing the newly provided furniture at GGPS Kagaan*



*Health and Hygiene session in progress at GGPS school*

students, after the training sessions, were dressed up neat and tidy with their hairs properly combed and nails paired. They were also found keen to keep their hands clean after they consumed food or used toilets. Hygiene sessions, thus, had a major impact in improving the health etiquettes of the students.

The training of PTC was also an important component of the project. BEFARe staff arranged ten sessions of PTC trainings. During the trainings, the community members were sensitized about the role and responsibilities of PTC's in the promotion of education in their village as well as in the maintenance of schools. In both the PTC training sessions, the participants enthusiastically participated in the training sessions and vowed to play a more proactive role in their school matters thereby materializing the true spirit of PTC's.

All the activities of the project were successfully completed in the month of December 2015 much to the satisfaction of UNHCR and the Education department who in their visit to the school appreciated BEFARe for its untiring efforts to promote the cause education among the needy children. The project in its entirety benefited 690 students including 165 Afghans, 15 school teachers along with village Kagaan community by facilitating them with decent educational facilities wherein their children can study without any hurdle which

would bring them at par with their fellow children at the national level. Both the school have now become model schools of the village.

### **Association for Aid and Relief (AAR) Support to Education:-**

BEFARe and AAR Japan worked in partnership in 2012 and 2013 to improve the educational facilities and to enhance sanitation awareness in Afghan refugee schools based in camps. These projects supported massive structure repairs that were badly needed and also constructed a large number classrooms, toilets, verandas etc. The structures were constructed taking in to consideration the special needs of children with disabilities. BEFARe and AAR Japan in March 2015 agreed to continue disseminating the importance of sanitation and hygiene in the 39 schools supported in the year 2012, 2013 and 2014. Under the project which lasted from March to November 2015, two day ToT Refresher Sessions and Maintenance seminar was arranged for the teachers to enable them to continue to raise sanitation and hygiene awareness



*ToT Session at MSB-343, Akora Khattak*

in these schools.

The pattern of training of teachers was such that those teachers who had received ToT in the year 2012, 2013 and 2014 provided 2 day ToT sessions to the newly transferred teachers in the current project. The 2 day ToT Refresher Sessions were held





*BEFARe staff in training teachers at Mian Gul Koorona Government Girls School*

at 7 Afghan school and 32 Pakistani government schools. In the ToT sessions, the newly inducted teachers were provided training on sanitation and hygiene, including hand washing, proper usage of wash rooms and clean water, prevention of diarrhea and to make students aware of the importance of sanitation and hygiene.

Apart from ToT, a maintenance seminar was also held in which teachers of the 7 Afghan schools and 36 Pakistani government schools participated and

shared examples of good practice of facility maintenance, sanitation and hygiene habits for strengthening school management systems. All the participants vowed to build up on the trainings they received in the ToT sessions. The intervention thus proved a great support not only in re-confirming AAR and BEFARe support but for its endeavors to promote health and hygiene at schools.

## COMMUNITY PARTICIPATION AND DEVELOPMENT



*A view of community gathering at BEFARe school*

In the context of development, community participation refers to an active process whereby beneficiaries influence the direction and execution of development projects rather than merely receive a share of project benefits. They aspire to enhance their well being in terms of income, personal growth, self-reliance or other values they cherish. Active community participation in project planning and implementation improve project design through the use of local knowledge, increase project acceptability, produce a more equitable distribution of benefits, promote local resource mobilization and help ensure project sustainability.

Community participation is a social and behavioral change which takes place under normal situations, however, it becomes arduous in refugees situation with discernible Dependency Syndrome and where education is the least priority of the target

population. Therefore, soliciting maximum support from the community is only possible through professional approaches, techniques and most importantly with continuous and close liaison with the community. Community participation enhances possibilities for project efficiency and effectiveness, cost-recovery, social acceptability, and sustainability.

In view of the importance of community participation, BEFARe included this concept since its inception in all its administered schools in the AR camps. The core objective of mobilizing the Afghan communities for self-reliance and sustainability in the supervision of their schools was to ensure the maintenance of the schools through awareness, involvement and empowerment. Since then, the department has been playing an active role in the management of their school affairs. Owing to

untiring efforts of the CP&D department, the Afghan communities today are cognizant of the fact that their active participation is paramount in promoting education and in meeting other challenges they are faced with since their migration to Pakistan since 1979. During the year 2015, the CP & D department undertook different types of activities through physical and financial participation of the community which was reflected in school educational development.

### School Management Committee Meetings and Follow up visits by CP&D staff during the year:-

During the reporting year, meetings with the School Management Committees (SMCs) and follow-up visits were regularly carried out by the Community Motivators (CMs) to provide guidance and orientation to the respective communities with regards to the management of their school affairs. The CMs core objective was to mobilize / convince

the communities to continue to play an active role in the implementation of the educational program for their children. The community members were apprised of the importance of their role in developmental sector especially when the efforts were directed towards educating their children.

Besides other matters, the Community Motivators and School Management Committees (SMC's) also regularly discussed/addressed diverse issues in their routine regular meetings related to the school affairs and resource mobilization. Owing to their efforts, the minor issues and challenges which raised their heads from time to time were managed at the community level resulting in feeling of ownership among the SMCs members. Below table reflects the number of SMC meetings and follow up visits conducted by BEFARe staff from time to time during the reporting year.

Sub-Office	Meeting with SMCs by CMs			CP Follow up visits to other activities		
	Male	Female	Total meetings	Male	Female	Total Follow up visits
<b>Abbottabad</b>	52	41	93	65	55	120
<b>Peshawar</b>	55	37	92	128	76	204
<b>Mardan</b>	39	29	68	108	45	153
<b>Kohat</b>	45	28	73	111	44	155
<b>Timergara</b>	45	22	67	80	35	115
<b>Total</b>	<b>236</b>	<b>157</b>	<b>393</b>	<b>502</b>	<b>255</b>	<b>747</b>



SMC meeting in progress at MSB- 027



Practical demonstration by a teacher on PHAST

## Two days training to SMCs on Participatory Hygiene and Sanitation Transformation (PHAST) Under PRM:-

Access to improved water and sanitation facilities form an important part of human rights. Having said that, just the mere provision of proper WATSAN facilities, does not on its own, necessarily lead to improved health. There is also a need for proper application of health and hygiene practices. There is now very clear evidence showing the importance of hygienic behavior and its indelible impact on the lives of the people. For instance, Hand-washing with soap can significantly reduce the incidence of diarrhea, which is the second leading cause of death amongst children under five years old. In fact, recent studies suggest that regular hand-washing with soap at critical times can reduce the number of diarrhea bouts by almost 50 per cent. Good hand-washing practices have also been shown to reduce the incidence of other diseases, notably pneumonia, trachoma, scabies, skin and eye infections and diarrhea-related diseases like cholera and dysentery.

The key to increasing the practice of hand-washing along with other hygiene practices is possible only through awareness and behavioral change. In cognizance of this ideal, BEFAre carried out Health and Hygiene promotion sessions in its administered AR schools to promote the ideals of good health. During the year 2015, 21 SMC trainings were conducted under PRM initiative in sub-office Abbottabad, Peshawar and Kohat with total participation of 287 SMC members.

## Training methodology:-

The training methodology for conducting health and hygiene sessions incorporated:

- Brain storming
- Providing necessary information through;
- Lectures
- Discussions
- Group work
- Demonstrations

## The contents of trainings were:-

- Demonstration of hand washing, tooth brushing
- Animal cares and removal of feces
- Sanitation
- Healthy living environment
- Communication for social change
- Participatory Hygiene and Sanitation Transformation (PHAST)
- Objectives and advantages of PHAST approach
- Focal Group Discussion (FGD)
- Monitoring and Evaluation of PHAST
- PHAST Framework
- Responsibility of School Management Committee.
- Action Plan for improving hygiene and sanitation in camp and schools

## Community supported Staff in schools:-

The success of Community Participation and Development can be gauged from the level of community involvement in the schools. In this aspect, CP&D department played active role in encouraging and mobilizing communities to

Sub office	No of SMCs received training		Members participated	
	Male	Female	Male	Female
Abbottabad	4	4	56	56
Peshawar	2	4	21	58
Kohat	5	2	68	28
<b>Total</b>	<b>11</b>	<b>10</b>	<b>145</b>	<b>142</b>
<b>G-Total</b>	<b>21</b>		<b>287</b>	

financially support 115 watchmen for performing their duties at the schools. By the end of the reporting year, community was also providing financial support to 179 teachers, which is a reflection of active community participation in education of their children.

Detail of incentives paid from school funds to community supported staff From January to December, 2015 is reflected in the below table:-

Months	Community Paid Teachers			Community Paid Watchmen		
	No. of Supported Schools	Teachers	Incentive paid PM in Rs.	No. of Supported Schools	Watchmen	Incentive paid PM in Rs.
January	80	172	680500	127	115	462800
February	80	167	667800	127	113	413800
March	79	164	802500	127	114	517150
April	79	166	788100	127	116	484475
May	79	163	784700	127	116	496125
June	79	163	111500	127	116	496125
July	79	163	0	127	116	0
August	79	163	131333	127	116	248580
September	73	144	817566	127	116	484475
October	85	173	888875	127	116	497280
November	85	177	929016	127	113	505730
December	86	179	940550	127	115	535930
<b>Total</b>		<b>7,542,440</b>			<b>5,142,470</b>	
<b>Grand Total</b>			<b>12,684,910</b>			

role-plays performed by the adolescents. In this aspect, several multidimensional competitions were organized in the schools to provide and encourage extra-curricular activities amongst the students. Some of them are highlighted below:-

- Sensitization of all the SMCs on retention of students and community mobilization
- Enrolment campaigns were held in schools/camps through community mobilization

### Extra-Curricular Activities:

Extra-curricular activities and competitions form an integral part of education development process. While some parents are a bit skeptical about their children participating in extracurricular activities, these activities bring spirit of healthy competition, realization and sense of responsibility among the students besides entertainment. Allowing your child to get involved in extracurricular activities at school is a wise choice, and it can be a critical element in helping them to nurture and polish their educational and working skills. In the year 2015, BEFARe CP & D team chalked out a number of activities where SMCs' members, parents of the students, youth groups and camp elders took part to observe speeches, skits, sports competitions and

- Annual days were organized in May and June at the end of academic session in 81 BEFARe schools with the participation of 4108 students and 5880 SMC members/Parents
- Worlds' Refugee Day was organized in 17 schools of BEFARe wherein 88 students performed different items and 470 community elders also participated
- International Women Day was celebrated in 5 camps wherein 114 mothers / elders participated
- 16-Day of Activism against Gender Violence awareness campaign for international women rights was organized in November / December 2015 at 13 schools comprising of 30 SMCs in 43 districts of KPK

### **Sixteen Days of Activism against Gender violence:-**

BEFARe planned and launched 16 days awareness and activism campaign regarding HIV/AIDS and Human Rights in the schools as well as AR camps as part and parcel of social mobilization. The crux of the campaign was to join hands with the international community and contribute towards a global campaign i.e. "From peace in the Home to Peace in the World: Make Education safe for All" that seeks to mobilize communities around the world. In this regard, various sensitization gathering / meetings with SMCs members, students, parents,



*Students participating in 16 days of Activism*

Youth groups, religious leaders were organized. The camps elders remained actively involved during the campaign and played a pivotal role in it. The 16 days of activism lasted from 25th November till 10th December 2015 in different schools of BEFARe. The event was widely attended and appreciated by the students, teachers, SMCs members, Social Animators, and elders of the camps.

### **Celebration of International Women's Day:-**

Women's Day is celebrated throughout the globe on March 8th every year. Celebrating Women's Day provides an opportunity to appreciate the remarkable contribution of women to our society. Women constitute over 50% of Pakistan's Population and it would be unfair if their contributions in our society are not highlighted. In cognition of the important role women play in our society, every year BEFARe celebrates International Women's Day. This year as well, the day was celebrated with vigor and enthusiasm in five AR camps.



*International Women day being celebrated with vigor and enthusiasm*

### **Tree plantation campaign:-**

Tree plantation campaign was also launched in all operational schools of BEFARe during the year 2015. The campaign was to highlight the importance of safe, clean and protected environment and its observance across all cadres. In the campaign, seasonal flowers and trees were planted in different schools and camps. The students as well as community elders played a vibrant role in the campaign and ensured its success through their untiring efforts.

### **World Refugees Day Celebration:-**

World Refugee Day is commemorated on 20th June each year. The day is celebrated worldwide to draw public attention to the plight of the millions of refugees worldwide who have been forced to flee their homes due to war, violent conflicts and persecution. This day is a poignant reminder of the

Camps wise bifurcation of the celebration is as below.

S. #	Camp	No. of students participated	No. of SMC members/parents participated
1	Akora (Peshawar)	32	28
2	Ghamkol (Kohat)	18	16
3	Pania (Haripur)	16	14
4	Khazana (Peshawar)	22	26
5	Khazana (Peshawar)	16	30
<b>Total 5 Camps in KPK</b>		<b>104</b>	<b>114</b>

conditions refugees are living with throughout the globe. There are approximately 1.5 million registered and an equally number of unregistered Afghan Refugees who reside in Pakistan. BEFARe, as a leading organization catering to the educational needs of the AR, also celebrated the International Refugee Day in coordination with all stakeholders. The International Refugee day was celebrated a bit earlier this year due to the Holy month of Ramadan.

#### Fund Raising in schools:-

Since the core responsibility of Community

Participation and Development Unit is to mobilize the communities in managing their school affairs, it remained active in ensuring ever increasing fund raising. With increasing engagement, refugee communities continued to support education of children and exhibited their support through financial and physical contributions. As a standardized procedure, books of funds collected were maintained at school level. The funds raised by SMCs were utilized in completing the following tasks:-

- Improving school learning and physical



*Tree plantation at MSB- 081*

- environment as per needs
- Repair and maintenance of school buildings and infrastructure as per need
- Additional construction in schools on need basis
- Arrangements for organizing different functions at school level
- Provision of additional facilities in schools, digging of wells on need basis etc
- Tree plantation
- Utility payments
- Rent and land lease payments of schools etc
- Covering the incentives of school watchman and the community supported teacher



*Participation of students and elders on World Refugee day*

Below table bifurcates the total amount of funds raised in the reporting year in all the schools.

Sub office	Schools observed WRD	Students took part	Student participated	SMCs/elders participated
Abbottabad	4	20	220	120
Peshawar	4	16	150	90
Mardan	3	10	80	80
Kohat	4	24	80	110
Timergara	2	18	110	70
<b>Total</b>	<b>17</b>	<b>88</b>	<b>640</b>	<b>470</b>



Sub-Office	No. of Schools	Fund raised in Year 2015		Total
		Male	Female	
Abbottabad	32	6077331	700833	6778164
Peshawar	27	3310480	410133	3720613
Mardan	29	2407689	489827	2897516
Kohat	22	3238021	179018	3417039
Timergara	17	394087	232280	626367
<b>Total</b>	<b>127</b>	<b>15427608</b>	<b>2012091</b>	<b>17439699</b>

#### Community contribution and expenditure report 2015:-

Summary of All Sub-offices in the year 2015	GRAND TOTAL (Breakdown)		
	Schools	Amount spent	Expenses %
Construction	3	146,000	0.8 %
Repair and Maintenance	51	786,273	4.5 %
Item purchased	127	2,488,793	14.6 %
Utilities payments	62	958,546	5.5 %
Extracurricular activities	81	124,505	0.8 %
Social campaigns	7	5,330	0.1 %
Community paid Teachers	86	7,542,440	43.8 %
Community paid Watchmen	127	5,142,470	29.9 %
Previous year balance (Year 2014)	127	785,978	-
Funds collected in the year 2015	127	17,439,699	-
Total accumulated amount in 2015	127	18,225,677	-
Grand Total of Expenses	127	17,194,357	-
Balance as on January 01,2016	127	1,031,320	-

Statement of Community Contribution and expenditure report from 1996-2015:-

YEAR	RECEIPTS	PAYMENTS	UNSPENT BALANCE
<b>1996-1997</b>	366545	203662	162,883.00
<b>1998</b>	358993	490698	(131,705.00)
<b>1999</b>	708433	729719	(21,286.00)
<b>2000</b>	1480314	1499690	(19,376.00)
<b>2001</b>	2414379	2404277	10,102.00
<b>2002</b>	3447215	3382203	65,012.00
<b>2003</b>	3281316	3269886	11,430.00
<b>2004</b>	3415051	3492116	(77,065.00)
<b>2005</b>	3862331	3704634	157,697.00
<b>2006</b>	5717294	5907507	(190,213.00)
<b>2007</b>	7710996	7665864	45,132.00
<b>2008</b>	7882976	7738263	144,713.00
<b>2009</b>	8391560	8183191	208,369.00
<b>2010</b>	8795664	8790267	5,397.00
<b>2011</b>	9985226	10107211	249,105.00
<b>2012</b>	12595385	11601389	1,243,101.00
<b>2013</b>	13593158	13449613	1,386,646.00
<b>2014</b>	15763297	16363965	(600,668.00)
<b>2015</b>	17439699	17194357	245,342.00
<b>Total up to Dec'15</b>	<b>127,209,832.00</b>	<b>126,178,512.00</b>	<b>1,031,320.00</b>

## MONITORING AND EVALUATION

**M**onitoring and evaluation is key to reach the targets of development goals. BEFARe has excelled in offering unmatched services as Third Party monitoring, evaluation and validation of developmental projects in FATA, FRs and a number of militancy affected settled areas of KP since 2008.

During the year 2015, BEFARe provided similar services under the project titled 'Monitoring and Evaluation Services for USAID/OTI funded projects in Pakistan, through its established Independent Monitoring Unit (IMU).

USAID/OTI has supported around 1,000 quick-impact, small-scale projects across Pakistan and KP during the reporting period. A typical project lasts 3-4 months in length, involves community inputs and is responsive to its needs, and strengthens the relationship between the Government of Pakistan and the community. The USAID-OTI Pakistan Transition Initiative (PTI) faces numerous challenges in accurately monitoring and evaluating projects in FATA/ /Khyber Pakhtunkhwa. Because of the challenging security situation, it became inevitable for USAID-OTI to form partnership with a local Pakistani partner based preferably at Peshawar and staffed by Pashto speaking locals, for deployment to the area to obtain accurate



*IMU Engineers during a monitoring visit*

information of its projects. Hence, BEFARe has been chosen and as such providing services to USAID / OTI.

The project is divided between two programmes: FATA/KP program and Pakistan Expanded Regional Stabilization Initiative (PERSI) to other provinces of Pakistan. Under PERSI component, IMU is functioning through its field offices in Karachi and Southern Punjab to fulfil the extended evaluation requirements.



*IMU Engineers monitoring infrastructure grants*

---

The purpose of the project is to assist USAID/Pakistan to verify, assess, monitor, evaluate and submit feedback of pre identified development projects. The project intends to achieve the following objectives;

- To monitor and evaluate the running and completed development projects
- To have an understanding and report on the perception of the beneficiary community about the Government development initiatives.
- To analyse the extent of interaction between the local communities and Government.
- To analyse the extent of ownership (for maintenance) of the communities of the completed projects.

The operations covered by both the programmes under IMU are explained in detail below:

IMU program is responsible for the evaluation and monitoring of grants completed by the implementing partners of OTI i.e. Creative, IOM and Internews in various FATA, FR regions, districts of Sindh, KP and Punjab. Over the period of 41 months (April 2012 to August 2015) IMU FATA/KP monitored/evaluated a total of 1131 grants. During 2015, the numbers of grants were around 400. In the same period, IMU-Karachi received 246 grants for evaluation. A total of 136 grants were received by IMU-Multan for evaluation throughout South Punjab (Multan, Lodhran, Muzaffargarh, Bahawalpur) and Lahore District.

IMU received three types of grants for monitoring/evaluation that included regular grants, real time monitoring grants and large infrastructure grants. Regular grants consisted of quick impact schemes that are implemented within duration of four to six months. There were three types of regular grants that were evaluated by IMU.

- Small Infrastructure grants: Such grants mainly included DWSS schemes, irrigation channels, schools/colleges rehabilitation, GoP offices/ hospitals/ BHUs rehabilitation, street pavements, roads, solar lighting, FPWs etc.
- Socio-cultural grants: Such grants covered sports competitions, students' educational trips, poetry sessions on various issues, debate/painting/singing competitions, awareness sessions on various issues, celebration of International days etc.
- Training grants: It included trainings on vocational, teachers' capacity building, farming, journalism and on POC roles and responsibilities.

For evaluation of grants, a detailed desk review of the grant document was carried out with the M&E officer. After that a submission date was assigned to him/her. For data collection, semi-structured questionnaires were separately developed for small infrastructure, socio-cultural and training grants. Pictures and personal observations were also incorporated in grant findings. Engineering templates were developed to collect data that helped in corroborating the engineering assessments for infrastructure grants.



*Real time monitoring of grants by BEFARe team*

---

Upon submission of the raw data (including beneficiaries' feedback, pictures and engineering Performa) a review was conducted. The beneficiaries' feedback, pictures, IMU observations and engineering details were all cross checked for any discrepancies. After the raw data review, a final report was generated by IMU for that specific grant containing analysis of the raw data, relevant pictures, engineering assessment prepared by IMU staff and beneficiaries' comments.

For record purposes, a grant tracker was and is also maintained for the regular grants containing information such as grant name, number, received data, field visit dates and submission to the OTI data. Prepared reports along with the grant tracker were submitted to the OTI for review.

Real time monitoring of grants started in January 2015. The purpose was to rectify any issues or shortcomings before the completion of the grants so as to increase the effectiveness of the grants. A total of 19 soft grants were monitored from January 2015 till August 2015.

IMU FATA/KP also maintained POC Hotlines. For this purpose, two cell phone numbers and two landline numbers were allocated to IMU. A complaint registration form was designed and POC compliant record was maintained. A total of 82 POC hotline complaints were handled by IMU-FATA/KP.

#### **Challenges confronted during the program:-**

During the scheme evaluations or monitoring, occasionally M&E officers would face various security challenges mostly in FATA, KP and FR regions due to the violent geo-political situation of the area. In such cases, the site visit was delayed and after the third attempt, the grant site was forwarded to OTI for exemption.

The following challenges were encountered during the implementation of the programme both in KP FATA as well as Punjab and Sindh.

- Security remained one of the key challenges that not only hampered the grants evaluation, caused delays but also resulted in cancelation of grants that were not evaluated due to security issues.
- In real time monitoring grants grantees shared a tentative schedule which caused problems in regard to random selection of events/schools of the particular grants. Grantees were reluctant to share the finalized schedule and at few instances, grantee shared schedule of only those events which they wanted IMU to attend.
- Changes incorporated in grant milestone or changes made to its status were not shared with IMU. Any un-intimated changes resulted in revision of evaluation methodologies and tools.
- Length of questionnaire has usually been a problem. Beneficiaries usually get frustrated with lengthy questionnaire. Thus, it resultantly impacts the quality of the data collected as well. Similarly conducting survey for a one day event was a challenge. The beneficiaries usually get irritated and feel exhausted while filling lengthy questionnaires.
- The excessive flow of grants for South Punjab region during the period from January to June 2015 resulted in excessive targets for the field staff. Furthermore, clubbed with long journey time resulted in increment in stress levels of the employees.

## SUSTAINABLE LIVELIHOODS

### Population Refugees and Migration (PRM) Supported Livelihood Program:-

**E**ducation and training is vital for productive employment and economic and social development. Technical and Vocational Education and Training (TVET) is viewed as a tool for productivity enhancement and poverty reduction. As there is a strong correlation between the proportion of TVET students at the post-secondary level and per capita income, many countries have taken steps to strengthen policy guidance and regulatory frameworks for technical and vocational education and training and to improve partnerships with private sector and employers. However, the sad reality is that in Pakistan, there is paucity of resources to engage thousands of unskilled youth in the developmental work force. To bridge this gap, there is a need to revitalize the sector of Technical and Vocational education by inducting new work force which not only caters to their families but also contributes towards the national economy.



*A view of handmade clothes by the trainers*

In cognition of the importance of technical and vocational education, BEFARe has been extending its services to both the Afghan refugees as well as the local host communities through livelihood programs in Pakistan since its inception. Till date, BEFARe has facilitated thousands of youth - fifty percent of which constitute women – by imparting them with state of the art training in different demand driven trades.

### A Silver lining

Muslim Khan belongs to village Khar Batkhela. He left his education after passing Matric as his mother passed away. After the death of her mother, his father was not supportive towards his family. As fortune would have it, during the mobilization activity of BEFARe-PRM livelihood Program, he came to know about the courses offered by Chakdara Poly Technic Institute (CPI). He visited the Center where he was selected on the set criterion of pre-test.

He was enrolled in Motor Rewinding Trade as he showed his inclination towards this profession and also he had prior knowledge of this profession. He was an intelligent and regular student of the class and completed his course with full enthusiasm and in second month of the course, he started his internship at a local shop near by his residence at "Ilyas Electrical Engineering Works" shop. Over a period of time, he mastered the art of electrical engineering works in the shop. Owing to his hard work, resilience, and passion about his work, the shop owner is now extremely pleased to have him as his main worker. In a very short time he has gained popularity in the local market as a reliable electrician and more and more people visit the shop where he works. Owing to the credibility he has developed over a period of time, the number of people visiting the shop has increased manifold which has now made him to think of establishing his own new shop at Khar Batkhela. Hence he is contemplating initiating his own business. He is extremely happy and envisages a bright future ahead thanks to the BEFARe – PRM supported project.



In the year 2015, BEFARe continued to implement vocational skill training project, titled, "Assist Vulnerable Afghan Refugees and Host Population through Enhanced Opportunities of Quality Education and Marketable Livelihood". The project was initiated in 2012 with the support of US State Department Bureau of Population, Refugees & Migration (PRM). The objectives of the project were twofold – (a) to provide quality skill training in demand driven trades and (b) to create decent employment opportunities for the unemployed Afghan refugees and Pakistani host youth in

Peshawar and Lower Dir districts.

During the reporting year, BEFARe successfully completed its second year program of multiyear grant (2013-16) target by imparting vocational and technical skills to 337 (198 Male & 139 Female) neglected youth of Afghan refugees and local host communities. The organization provided skills training to the youth in 10 different basic and advanced trades namely:-

- Advanced Tailoring
- UPS & Solar Panel Installation
- Building Painting & Polishing

**Table: Details of skill training graduates of session 2014-15:-**

N o.	District	Institute Name	Trade	Male Graduates	Female Graduates	Total Graduates
1	Peshawar	National Institute of Design & Analysis	UPS making & Solar Panel Installation	21		21
2			Building Painting & Polishing	15		15
3			Adv. Tailoring	18		18
4		Female Camp Based Center	Adv. tailoring		21	21
5			Adv. tailoring		18	18
4			Adv. tailoring		20	20
7	Chakdara LowerDir	Chakdara Polytechnic Institute	Welding/metal work	16		16
8			Motor bike mechanic	20		20
9			Electronic repair & Motor Winding	20		20
10			Refrigeration & Air conditioning	18		18
11			Basic Tailoring	24		24
12		Female Camp Based Center	Tailoring and Embroidery		20	20
13	Tailoring and Embroidery			20	20	
14	Timergara Lower Dir	Microsoft College	Electrician & Solar Paneling	19		19
15			Advanced Tailoring	17		17
16			Trunk Making	10		10
17		Female Camp Based Center	Tailoring and Embroidery		20	20
18			Tailoring and Embroidery		20	20
<b>Total</b>				<b>198</b>	<b>139</b>	<b>337</b>

- Refrigeration & Air-conditioning (RAC)
- Motor Bike Mechanic
- Electric Motor & Rewinding
- Basic Welding
- Basic Tailoring
- Electrician & Solar Panel Installation
- Trunk Making
- Tailoring & Embroidery

In Peshawar, exam for 55 trainees of three male trades was conducted at NIDA Peshawar Training Institute and 59 trainees of three female trades at Camp Based Centers of Peshawar. In Timergara, exam for 46 male trainees in three trades was conducted at Microsoft College of Science & Technology (MCST) and for 98 trainees in five different trades at Chakdara Polytechnic Institute. On the other side, 40 female trainees exams in two courses were conducted at Chakdara Camp Based Center and same in Timergara. In the final exam, 54 trainees of Peshawar scored overall 76% marks and 59 female trainees scored 77% marks in both theory and practical assessment. In Timergara, 46 male trainees qualified their final exam scoring 83.98% marks and 40 females scored 90% marks while in Chakdara, 98 trainees scored over all 78% marks. Detail of courses and final result is stated below:

#### Assessment test of the trainees:-

In order to gauge the effectiveness of the offered skills training, BEFARe arranged an exam conducted by Trade Testing Board (TTB). Test was conducted in both theoretical as well as practical form. As per the result, 198 male trainees of 11 courses and 139 female trainees of 7 courses passed the final exam conducted by TTB in Peshawar and Lower Dir districts.

#### Peshawar male courses final examination result status conducted by TTB at NIDA training institute:-

No.	Trade Name	Appeared	Passed	% age Marks	Examination Details	
					Center	District
1	UPS Making & Solar Paneling	21	21	78%	National Institute of Design & Analysis	Peshawar
2	Advanced Tailoring	18	18	83%		
3	Building Painting	15	15	66%		
<b>Total</b>		<b>54</b>	<b>54</b>	<b>76%</b>		

#### Peshawar Female courses final examination result status conducted by TTB Camp Based Center:-

No.	Trade Name	Appeared	Passed	% age Marks	Examination Details	
					Center	District
1	Advanced Tailoring	21	21	76%	Camp Based Center	Peshawar
2	Advanced Tailoring	18	18	78%		
3	Advanced Tailoring	20	20	76%		
<b>Total</b>		<b>59</b>	<b>59</b>	<b>77%</b>		

#### Timergara male courses final examination result status conducted by TTB at MCST training institute:-

No.	Course Name	Appeared	Passed	% age Marks	Examination Details	
					Center	District
1	Electrician & Solar Paneling	19	19	85.37%	Microsoft College	Timergara, Lower Dir
2	Advanced Tailoring	17	17	86.85%		
3	Trunk Making	10	10	81%		
<b>Total</b>		<b>46</b>	<b>46</b>	<b>83.98%</b>		



**Timergara Female courses final examination result status conducted by TTB Camp Based Center:-**

No.	Course Name	Appeared	Passed	% age Marks	Examination Details	
1	Tailoring and Embroidery	20	20	90%	<b>Center</b>	<b>District</b>
2	Tailoring and Embroidery	20	20	91%	Camp Based Center	Timergara, Lower Dir
<b>Total</b>		<b>40</b>	<b>40</b>	<b>90.50%</b>		

**Chakdara male courses final examination result status conducted by TTB at CPI training institute:-**

No.	Course Name	Appeared	Passed	% age Marks	Examination Details	
1	Welding/metal work	16	16	87%	<b>Center</b>	<b>District</b>
2	Motor bike mechanic	20	20	82%	Chakdara Polytechnic Institute	Chakdara, Lower Dir
3	Electronic repair & Motor Winding	20	20	85%		
4	Refrigeration & Air conditioning	18	18	87%		
5	Basic Tailoring	24	24	67%		
<b>Total</b>		<b>98</b>	<b>98</b>	<b>78%</b>		

**Chakdara Female courses final examination result status conducted by TTB Camp Based Center:-**

No.	Course Name	Appeared	Passed	% age Marks	Examination Details	
1	Tailoring and Embroidery	20	20	91%	<b>Center</b>	<b>District</b>
2	Tailoring and Embroidery	20	20	90%	Camp Based Center	Chakdara, Lower Dir
<b>Total</b>		<b>40</b>	<b>40</b>	<b>90%</b>		

**BEFARe trainees installed solar water pump:-**

BEFARe and NIDA arranged a field visit of course trainees to Shamshatoo Refugee camp where trainees, under the direct supervision of their instructor, installed 3-HP solar water pump. During this process, trainees installed 16 solar panels on two large steel movable frames and connected electric wires of panels with inverter. Trainees connected cables of water pump with the inverter.

During installation process training, instructors provided needed support whenever needed.

The purpose of installing solar water pump was to make water available for household needs and most importantly for irrigating agricultural land. All trainees actively participated in installation of solar water pump.



*BEFARe trainees connecting cables during installation of solar panels for water pumps*

### **Provision of tool kits to successful graduates:-**

After the successful completion of skills training and conduction of final exam, BEFARe awarded course completion certificates and distributed tool kits amongst the graduates. It was heartening to note that the graduates also included handicapped trainees. Certificate and tools kit distribution ceremonies for skill training graduates were held in Peshawar, Chakdara and Timergara.



*Trophy being awarded to position holder graduate in Chakdara*

In Chakdara, tool kits distribution ceremony was organized in which completion certificates were also awarded to the successful graduates. The ceremony was attended by the representatives from the community and other stake holders. Notables who attended the ceremony were Filed Officer from UNHCR, RVA Chakdara, Enumerators of Chakdara and Timergara, Principal Chakdara Polytechnic Institute (CPI) and courses Instructors. All respectable guests and Instructor of CPI appreciated the efforts of BEFARe for effective implementation of the skill training program.

Similar tool kits and certificate distribution ceremonies were also organized for female graduates at Hajizai, Naguman and Khazana refugee villages Peshawar and in Chakdara and Timergara where total of 139 female graduates received certificates and tool kits in trades of tailoring and embroidery courses in Peshawar and

Lower Dir. Parents of the trained students and other distinguished guests appreciated BEFARe-PRM skill training program initiative and termed it as paramount for earning their livelihoods. BEFARe envisages that the provision of certificates and tool kits will assist the outgoing graduates to either start up their own businesses or to get a decent job placement both in Pakistan and Afghanistan.

### **Follow-up of graduates:-**

In order to ascertain the true impact of training program, follow up visits were conducted by BEFARe team to the graduates of previous as well as the reporting year. It was heartening to note that a vast majority of graduates were either employed with someone or had established their own businesses. The female graduates were also found to be working in their camps and were earning a decent amount for their sustenance.



*BEFARe team taking feedback from building Painting course employed graduate in Peshawar market*

### **BEFARe management team monitored vocational skill training program:-**

In March 2015, BEFARe team led by Manager Program & Implementation visited National Institute of Design and Analysis 'NIDA' Male Training Center Peshawar. BEFARe team visited Advance Tailoring classes and UPS and Solar Panel classes. BEFARe team inspected the course outlines, trainees work books and their stitched suits and designs. Suggestions for improvement were also put forward by BEFARe team which was appreciated and welcomed by the Instructors.



*Manager Program & Implementation (R) BEFARe meeting NIDA Principle*

Discussion session was also held with the trainees who showed their satisfaction with the quality of training being imparted in the institute.

BEFARe team also met with the principle of NIDA and discussed in detail the current training status, trainees motivation and interest, consumable material for more practice and about the placement of trainees at the end of in house training program. New market demand courses were also discussed in the meeting. In the end, BEFARe team appreciated NIDA team and their efforts for providing quality training to the needy communities.

**PRM Representative Field visit:-**

In 2015, PRM representative paid various monitoring visits to Peshawar& Lower Dir to ascertain the effectiveness of intervention for the welfare of hosting as well as refugee communities. He, along with BEFARe team,visited the work places of the graduates in Naguman and khazana and inquired from them about their current work status and income. PRM representative also visited the

female graduate's houses randomly in Hajizai refugee camp, where he interviewed female trainees and their earning after the successful completion of the training. He observed that not only female trainees had been working untiringly, they were also desirous to further improve their work skills so as to meet the growing diversified demands of the populace. PRM representative was satisfied with the performance of the female graduates and encouraged them to join hands with their male counter parts so to meet their economic



*PRM representative meeting graduates at their workplaces*

ends in an increasingly competitive world where economic survival has become an arduous task.

#### **Exhibition of products in Refugees camps:-**

BEFARe organized one day exhibition at Hajizai, Naguman, Chakdara and Timergara Refugee camps in Peshawar and Lower Dir. The aim of the exhibition was to develop linkages of skilled trainees with the community and market for income generation of the trainees. All female trainees of established centers and a large number of females from refugee camps and adjacent areas participated in the exhibition. Different products, including baby sleeping bags, ladies and kids



*Products displayed at Haji Zai Refugee camp*

garments were displayed at respective centers. The quality of exhibited materials was impressive which led to a great sale during exhibition much to the satisfaction of their owners. BEFARe team also



*A view of products in the Exhibition*

expressed its satisfaction over the work as it took months of hard work both at the individual as well as organizational end to come up with such a nice piece of work in different trades.

#### **PRM representative paysfield visit:-**

In the month of May 2015, PRM representative, RAS visited Lower Dir and Peshawar. The purpose of his visit was to monitor BEFARe Livelihood Skill Training Program graduates of phase one and two. He expressed his satisfaction with the livelihood skills training program and vowed his full support for project activities in the future as well. He lauded BEFARe's efforts for its untiring efforts for imparting vocational and technical skills to the needy population particularly women.

#### **BEFARe participated in Exhibition arranged by Church World Services in AQS gallery:-**

Church World Services arranged one day exhibition in AQS gallery Islamabad with the Support of Bureau of Population Refugee and Migration (PRM). All implementing partners of PRM from all over Pakistan participated in the exhibition and displayed the products made by the trainees. BEFARe also participated in it by presenting the products made by the trainees during the training sessions which included i) Shirts ii) Trousers iii) Clutches iv) Hand Bags v) Jewellery vi) Dyed Dupatta vii) Baby girls frocks viii) Male designed suits etc. PRM team visited stalls of all the



organizations and viewed the products displayed by them. BEFARe trainee's products, specially male and female designed suits were appreciated by PRM delegates as well as other visitors. Some of the

products were so impressive that they were sold out during the exhibition which underscored the high level of importance laid by BEFARe to the training programs.



*BEFARe team while displaying the garments in the exhibition*

## WOMEN EMPOWERMENT

**W**omen empowerment refers to the ability of women to transform their economic and social status with their representation in all major strata's of the society. When women are empowered, they participate in the decisions that affect their lives through leadership, training, coaching consulting and the provision of enabling tools. Women empowerment generally has three components: firstly, women's sense of self-worth, secondly, their rights to have a power of control their own lives and lastly, their ability to influence the direction of social change to create a just social and economic order nationally, internationally and universally. The lives of Pakistani women have changed during the past 30 years and they are more empowered and emancipated than they were ever before. More and more women are entering the workforce today. With remarkable resilience against multiple odds, greater numbers of women have now become economically independent and are contributing towards the welfare of their families. Having said that, still our women are confronted with several issues and need long term assistance.

BEFARe, over the years, through its various developmental programs, has launched several projects with the support of national and international community that primarily focussed on women empowerment. The organization extended assistance in all possible areas to women, girls, adolescents so as to reduce the gap between the rich and the poor in general and the men and women in particular.

### **Provision of technical and Vocational skills:-**

In the year 2015, through the support of PRM, BEFARe continued to assist Pakistani and Afghan women through Enhanced Opportunities of Quality Education and Marketable Livelihood project. During the reporting year, the organization successfully completed the second year of the



*A female trainee receiving accreditation certificate*

project by imparting vocational and technical skills training to the youth women of rural Afghan refugees as well as local host communities in district Mardan and district Peshawar.

### **Final assessment of trainees:-**

After completion of skill training, all the female trainees appeared in the final exam conducted by Trade Testing Board (TTB). In the exam, trainee's skills were assessed by examiners through written test and practical demonstration in relevant trades. According to result analysis, students overall achievement in final exam was recorded at over 85%. TTB uploaded final result of successful trainees on their official website as well.

### **Tool kits Distribution Ceremony:-**

After the successful completion of skills training and the assessment exam, the trainees were awarded certificates and toolkits. Female staff distributed certificates and toolkits to the female trainees in the ceremony held within refugee camps in Peshawar and Mardan.

### **Exhibition in refugees Camps:-**

One day exhibition was arranged by BEFARe team in all the five Camp Based Training centres in Peshawar



*A view of tool kits distribution to the successful trainees*

and Lower Dir. The exhibition provided an opportunity to the trainees to not only advertise the products but also to mobilize the community for vocational training and development of liaison with the market. All the participants were appreciative of the work of the female trainees and were of the view that skill and education can address their issues of unemployment and poverty enabling them to lead a normal life where they have the means to meet their day to day needs.

**Advanced tailoring course trainees received training in Tie-Dye and Jewelry making techniques:-**

BEFARe provided extensive training in modern Tie-dye and Jewellery making techniques in three female advanced tailoring /dress designing course to 60 trainees at Peshawar in its Camp Based established centers at Hajizai, Khazana and NagumanAR camps. BEFARe engaged two experts of Tie-Die and Jewelry making from local market



*Products displayed in the exhibition*



*Trainer displaying a dyed dupatta at Hajizai female training center*

who provided training to all the trainees and course instructors. During the activity, trainees were given training in modern dyeing techniques and were taught process of tying-dyeing on different fabrics. This training equipped the trainees with skills that would be supportive to them while designing different dresses to meet market demand and will also give them a great boost to their economic sustenance.

The activity of making artificial Jewellery was also carried out in three centers. An expert of Jewellery making trade provided training to the female trainees. The trainees were enthusiastic after the training as it motivated them to further explore the trade with a more meticulous approach which will assist them in accelerating their upwards economic inclusion.

**Training of Female School Management Committees:-**

An important component of BEFARe's women



*Training of Female SMC's in progress*

empowerment vision is the training of female School management Committees (SMC's) as they are integral part of managing school affairs. The female SMC's are responsible for the overall school maintenance as well as running of other administrative affairs. Considering the vitality of female SMC's, BEFARe has regularly arranged training for them.

In the year 2015, a total of 10 female SMC's were



---

trained in the BEFARe administered schools in which 142 female members participated. The trainings were conducted in Abbottabad, Peshawar and Kohat. The SMC's were provided various kinds of trainings including capacity building and assessment trainings. These trainings provided an impetus to the female members to take a leading role in their school affairs instead of just remaining

present in the school academic records. Resultantly, female members started to visit schools more frequently and placed a more stern check on the girls enrolment. The follow up sessions by BEFARe staff appreciated the female SMC members for their proactive role and asked them to continue with this mode of action for their own good as well as their children if they were to lead a bright life.

## OTHER HAPPENINGS:-

### Chief Executive BEFARe, Mr. ShakirIshaq attended INEE meeting on INEE strategic plan 2015-2017:-

INEE working groups meeting was held at New York, USA on 27-28 April, 2015. Mr. Shakir Ishaq, CE BEFARe attended the meeting as member of the INEE minimum standard working group. The two day meeting focused on INEE strategic plan 2015-17.

The four strategic priorities set during the working group meeting were:-

- To serve as a global advocate and thought leader, promoting education for all, and in all circumstances.
- To foster the strengthening of the evidence based practice through partnerships that inform research, policy and practice across humanitarian and development contexts.
- To increase the availability and accessibility of knowledge and information which build upon and improves capacities to deliver

education for all.

- To foster an engaged, inclusive and diverse strategic partnerships to achieve all other strategic priorities.
- BEFARe as active member of INEE remains committed towards implementation of the strategic plan of INEE.

### BEFARe distributed sweaters among students in its schools at winter zone:-

BEFARe with the generous support of UNHCR distributed 3,337 sweaters to all boys and girls students from grade 1 to grade 6 at 17 BEFARe schools located in winter zone of Timergara in April, 2015. Vulnerable Afghan community was very pleased on receiving the sweaters.

### UNHCR visit to Ghamkol RV, Kohat:-

UNHCR official team members headed by Mr. Ephraim Tan and Mr. Marin, accompanied by FRD officials, visited 2 BEFARe schools i.e. MSB-190 Ghamkol-2 & MSB-191 Ghamkol-3. The core purpose of the visit was to monitor ongoing project activities at schools, students' enrollment, schools



CEO BEFARe, Mr. Shakir Ishaq with members of INEE at working group meeting on strategic plan 2015-2017



*UNHCR Officials visit Ghamkol RV, Kohat*

infrastructure and security measures as per the direction of KPK government after 16 December, APS Peshawar incident. The schools were allocated funds by UNHCR for boundary wall raising, emergency gate for safe exit and windows in classrooms. The delegation after keenly observing schools, appreciated community involvement in education sector.

### **BEFARe livelihood trainees install solar water pump in Shamshatoo Camp:-**

BEFARe trainees of UPS making and Solar Panel installation trade at NIDA-Peshawar installed 3 Horse Power solar water pump in Shamshatoo refugee camp. BEFARe and NIDA arranged a field visit of current course trainees to Shamshatoo refugee camp where trainees under the direct supervision of their instructor installed 3-HP solar water pump. During this process, trainees installed 16 solar panels on two large steel movable frames and connected electric wires of panels and water pump with the inverter.

During the installation process, trainer provided support to the trainees when needed. The purpose of installing solar water pumps was to make water available to the needs of households and irrigation of agricultural land, as nowadays electricity and its low voltage is a pressing issue to run tube well mostly in the rural areas of Pakistan.

### **BEFARe participated in an Exhibition arranged by Church World Services in AQS Gallery Islamabad:-**

Church World Services arranged one day exhibition in AQS gallery Islamabad with the Support of Population Refugee and Migration. All implementing partners of PRM from all over Pakistan participated in the exhibition and displayed their products made by trainees. BEFARe also participated in it by presenting the products made by the trainees during the training sessions which includes i) Shirts ii) Trousers iii) Clutches iv) Hand Bags v) Jewelry vi) Dyed Duppatas vii) Baby girls frocks viii) Male designed suits etc. PRM team visited the exhibition. They visited stalls of all organizations and viewed the products displayed by them. BEFARe trainee's products specially male and female designed suits were very much appreciated by PRM and other casual visitors. The visitors purchase items as well.



*PRM program analyst Emily visited BEFARe stall in exhibition at Islamabad*

### **BEFARe organized Annual meeting/team building event at Nathiagali for its staff:-**

BEFARe as a tradition provides its employees the opportunity to travel together for greater bonding. The annual retreat with BEFARe is all about building a united team for a bright future, appreciate the best performers, relax and return to work with renewed spirit. This year BEFARe team building event was held at Elites Hotel in Nathiagali from 23rd-25th May, 2015. A total of hundred staff



*BEFARe staff engaged in recreational activities during the trip*

members from Peshawar and sub-offices across the country participated in the Annual gathering. BEFARe staff members including the management team participated in different interactive activities along with staff members during the event.



*BEFARe staff engaged in recreational activities during the trip*

observes all important national and international events regularly in refugee camps. World Refugee Day was also observed as part of community mobilization.



*Group photo of BEFARe staff members at team building/annual meeting held at Nathiagali from May 23 to 25, 2015*

**BEFARe Observed World's Refugees Day at Schools:-**

BEFARe, as a leading education agency for refugees in Pakistan, is continuously playing a vital role in refugee education with the support of UNHCR. It is with the help of CP&D department that BEFARe

The purpose of the event was to show solidarity with Refugees and convey message to the rest of the world that still millions of refugees, especially Afghans, are surviving out of their native land in conditions not conducive to decent living. Besides, they are dearly looking forward to restoration of



*Speech on Refugees History in MSB-133 RV Kogan, Mardan*

peace and prosperity in their homeland. The event was observed with great enthusiasm by the camp elders, teachers, and students who enlivened the occasion.

**BEFARe PRM team conducted toolkits distribution ceremony at Chakdara:-**

In the month of September, BEFARe-PRM livelihood team arranged ceremony for certificates and toolkits distribution among the trainees of Chakdara Polytechnic Institute (CPI-Chakdara) and



*Students performing in drama on WRD at MSG-082, Padana*

Microsoft College (Timergara). The ceremony was attended by Mr. Sattar Khan (Field Officer UNHCR), Mr. Fazal-e-Akbar (principal CPI-Chakdara) and all trades Instructors of BEFARe livelihood program. Samples of toolkits of all trades were displayed by the project team and a visit was arranged for all the guests to observe and check the quality of toolkits.



*Field Officer-UNHCR speaking to the trainees on Toolkits distribution ceremony - Chakdara*

---

### **UNHCR Donor's Mission visited BEFARe school:-**

UNHCR donor mission visited BEFARe schools (MSB-167, Khazana RV), Peshawar on October 29, 2015, accompanied by UNHCR Islamabad and Peshawar staff along with CAR. The visit to the school was facilitated by BEFARe. During their visit to the school, the delegation interacted with the teachers as well as with the students. They also held a meeting with the SMC members and camp elders who discussed the issues pertaining to Afghan refugees, current security issues in Afghanistan and its effect on the refugees in Pakistan as well as uncertainty with regards to renewal of POR cards. Community elders and SMC members requested donor missions to continue supporting Afghan Refugees due to no letup in their miseries despite more than three decades now to this human tragedy resulted in their forced migration to the neighboring country.

### **Commissioner AR Visited BEFARe School**

Muhammad Abbas, newly appointed Commissioner for Afghan Refugees, paid a visit to three BEFARe schools i.e MSB-153, Kababyan, MSB-343, AkoraKhattak and PSB 130 Jalala. During his visit, he was briefed by the FE team on various aspects of educational systems in place at BEFARe schools. He was also briefed on the community mobilization strategies used in engaging the community to support education especially female education. The Commissioner, Afghan Refugees interacted with the students where he shared his personal experiences as a student and the important role that education played in streamlining his life. He encouraged the students to work hard and make a difference in rebuilding Afghanistan.



*UNHCR Donor's Mission met SMC members at Khazana Camp*

---

**BEFARe trained its teachers on Creating Safe Learning Environment:**

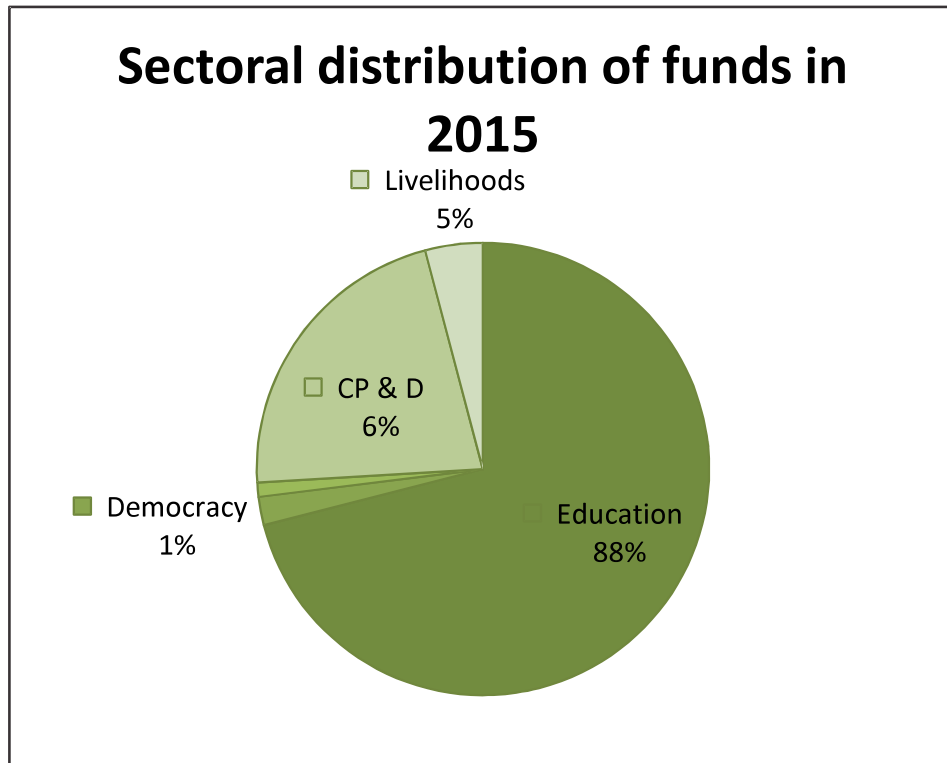
Training and capacity building is part of the educational process at BEFARe schools. BEFARe (FE) team organized one day training on Creating Safe Learning Environment (CSLE) with the support of UNHCR for 860 teachers (641 male + 219

female). BEFARe trained its 860 teachers on CSLE in 30 training centers including 09 female training centers at Sub-Office Abbottabad, Mardan Peshawar, Kohat and Timergara. The trainings contents included abuse, violence, exploitation and role of school and SMC's in ensuring of conducive environment for the teachers.



*Teachers training on Safe Learning Environment*

## SECTORAL DISTRIBUTION OF FUNDS IN 2015







**BEFARe Main Office (Peshawar)**  
153, Old Bara Road, University Town, Peshawar  
Phone: (091) 570 2955, 584 0631, Fax: (091) 584 1047